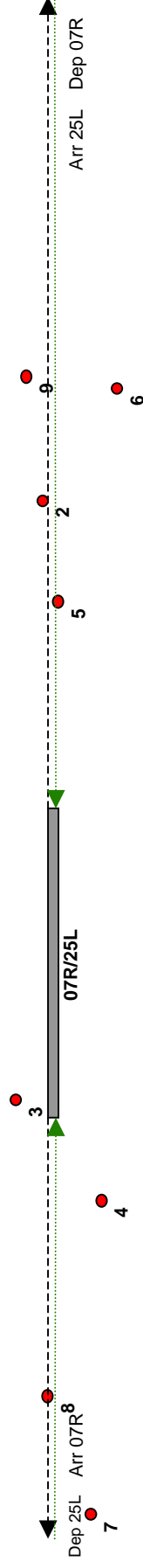


Flughafen Berlin Schönefeld

Fluglärmbericht 10 / 2008



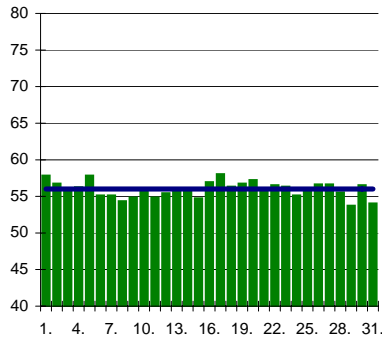
- | | | | |
|-----------------------|------------|--------------------------|------------------------|
| 2 Bohnsdorf, Waldstr. | 4 Selchow | 6 Waltersdf.,Waldsiedlg. | 8 Mahlow, Waldsiedl. |
| 3 Wassmannsdorf | 5 Hubertus | 7 Blankenfelde | 9 Bohnsdorf, Fließstr. |

SXF Äquivalenter Dauerschallpegel (q=4) Monat 10/2008

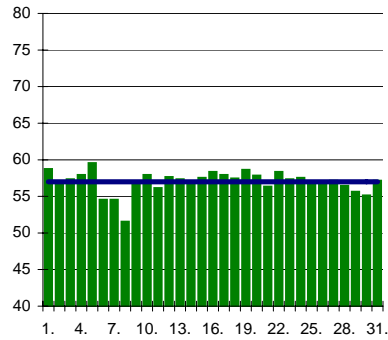


*) Nach DIN 45643 unzuverlässig. Messwert wegen zu geringer Zahl erkannter Überflüge

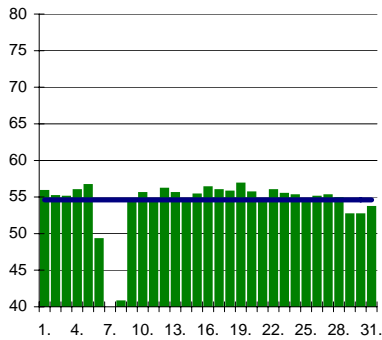
dB(A) Mst.2 MLeq = 56,0 dB(A)



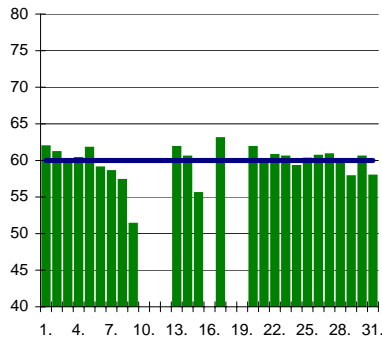
dB(A) Mst.3 MLeq = 57,0 dB(A)



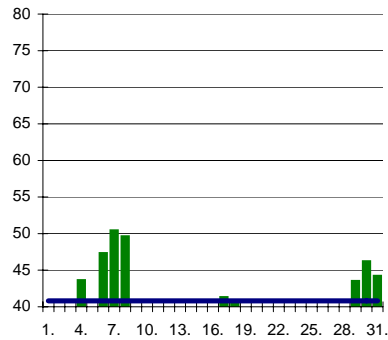
dB(A) Mst.4 MLeq = 54,6 dB(A)



dB(A) Mst.5 MLeq = 60,0 dB(A)

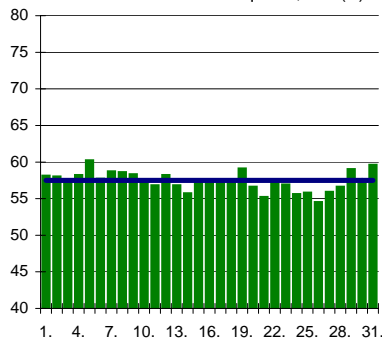


dB(A) Mst.6 MLeq = 40,8* dB(A)

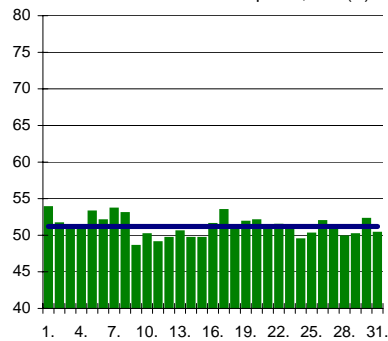


Station 7 z.Zt.außer Betrieb

dB(A) Mst.8 MLeq = 57,5 dB(A)

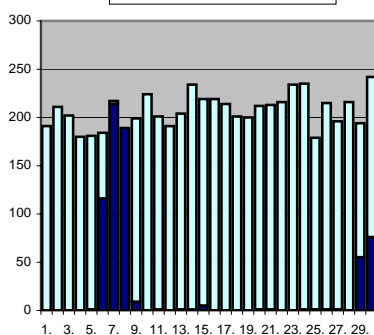


dB(A) Mst.9 MLeq = 51,2 dB(A)



Flüge in

■ Richtung 07 □ Richtung 25



Techn.Ausfälle:

08.10. M5 74'
09.10. M5 712' M8 64'
10.10. - 12.10. M5 1440'
13.10. M5 690'
15.10. M5 651'
16.10. M5 1440'
17.10. M5 555'
18.10. - 19.10. M5 1440'
20.10. M5 655'

Wetterbedingte Ausfälle:

01.10. 557' 02.10. 450'
05.10. 318' 16.10. 32'
17.10. 333' 19.10. 10'
21.10. 176' 26.10. 46'
30.10. 36'

SXF Energieäquiv.

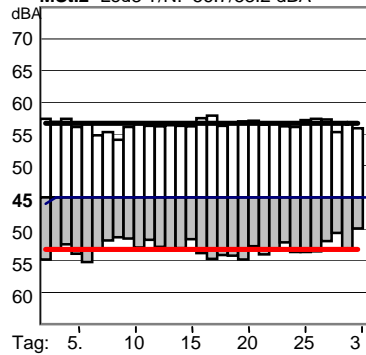
Dauerschallpegel (q=3)

Monat 10 / 2008

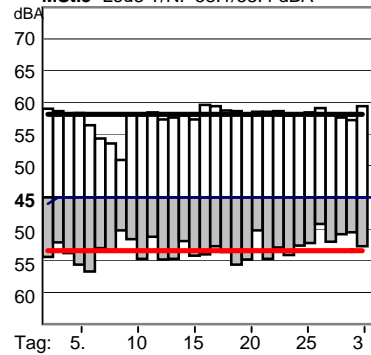


*) Nach DIN 45643 unzuverlässig. Messwert wegen zu geringer Zahl erkannter Überflüge

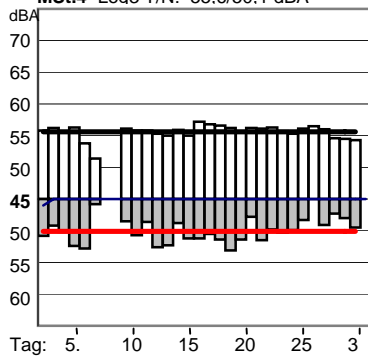
MSt.2 Leq3 T/N: 56.7/53.2 dBA



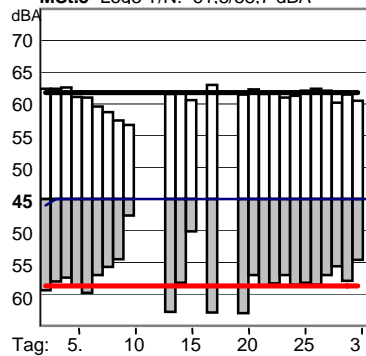
MSt.3 Leq3 T/N: 58.1/53.4 dBA



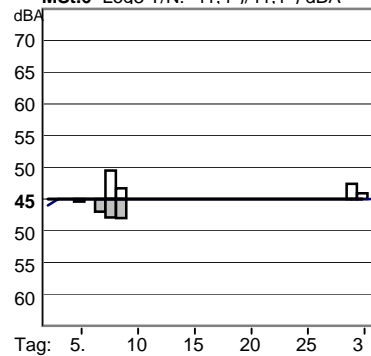
MSt.4 Leq3 T/N: 55.6/50.1 dBA



MSt.5 Leq3 T/N: 61.8/58.7 dBA

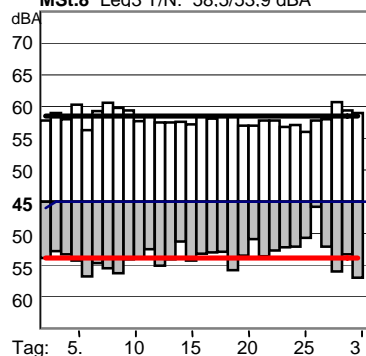


MSt.6 Leq3 T/N: 41.4*/41.1*) dBA

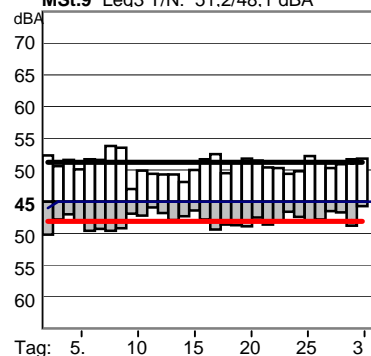


Station 7 z.Zt.außer Betrieb

MSt.8 Leq3 T/N: 58.5/53.9 dBA



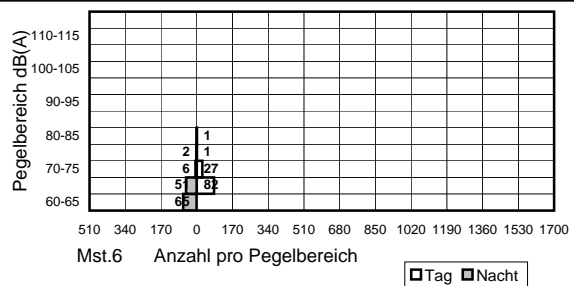
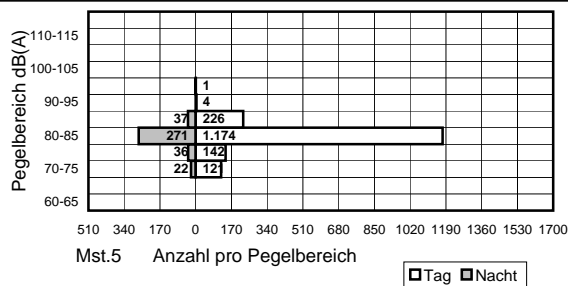
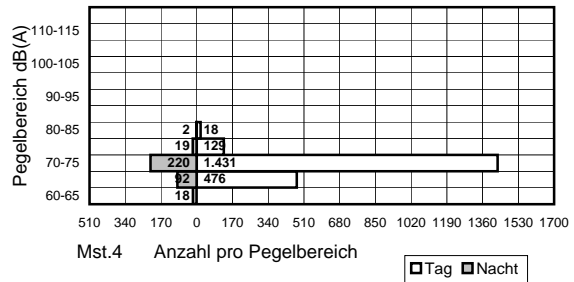
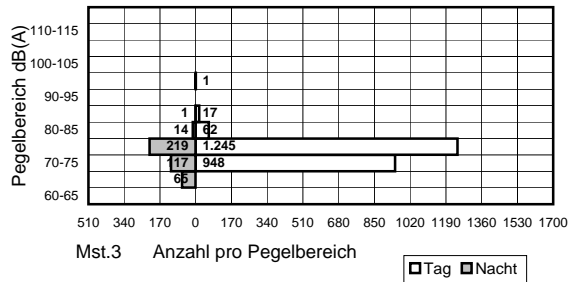
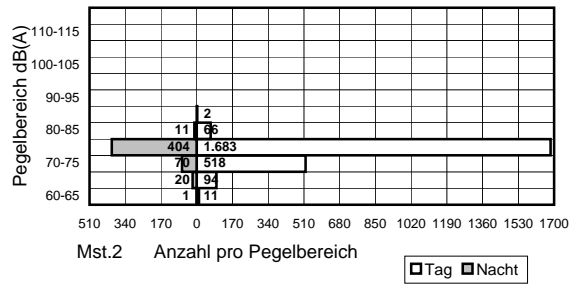
MSt.9 Leq3 T/N: 51.2/48.1 dBA



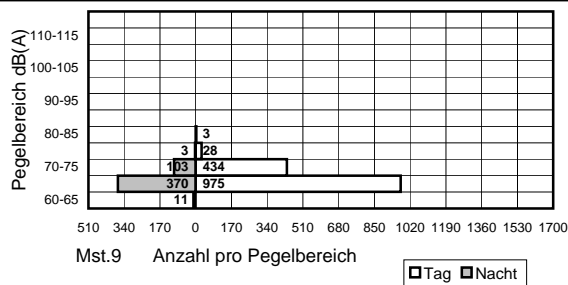
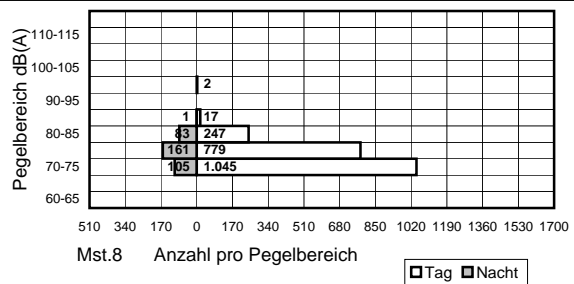
SXF

Monat 10/2008

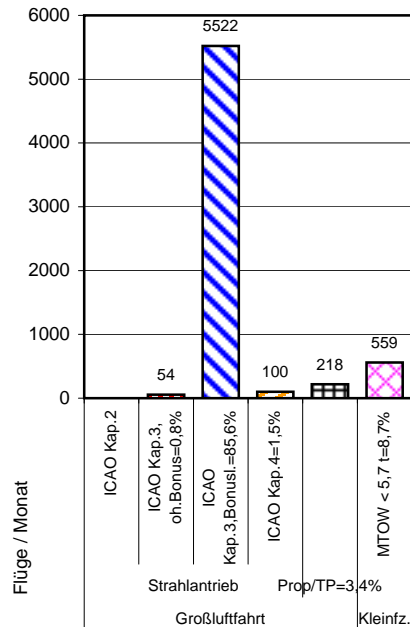
Häufigkeitsverteilung der Maximalschallpegel



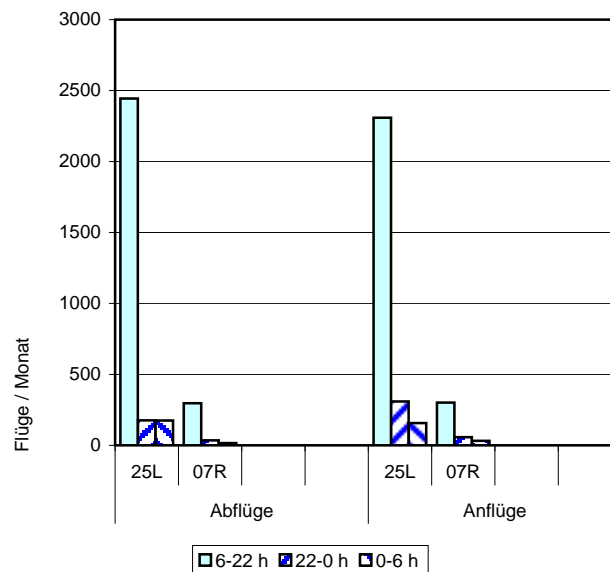
Station 7 z.Zt.außer Betrieb



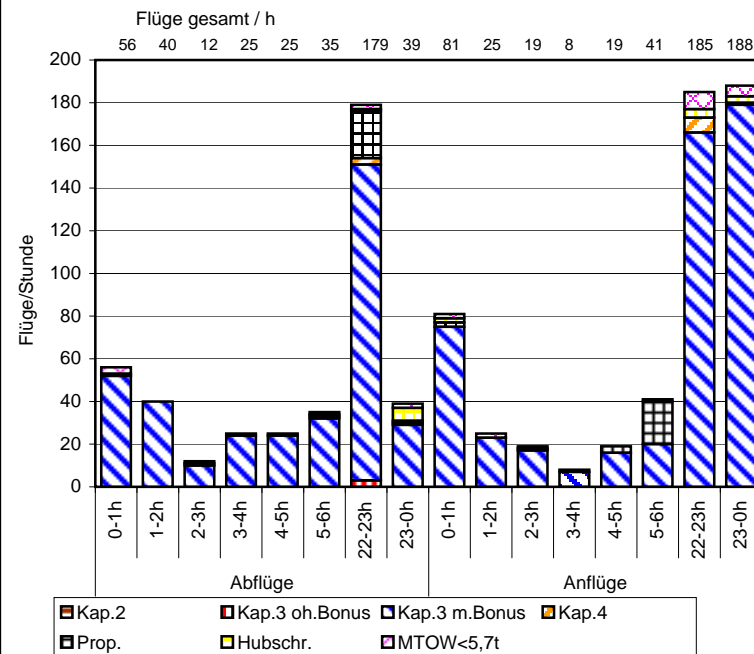
SXF Verteilung der Flüge nach ICAO-Lärmkategorien Oktober 2008
Gesamtanzahl Flüge: 6453



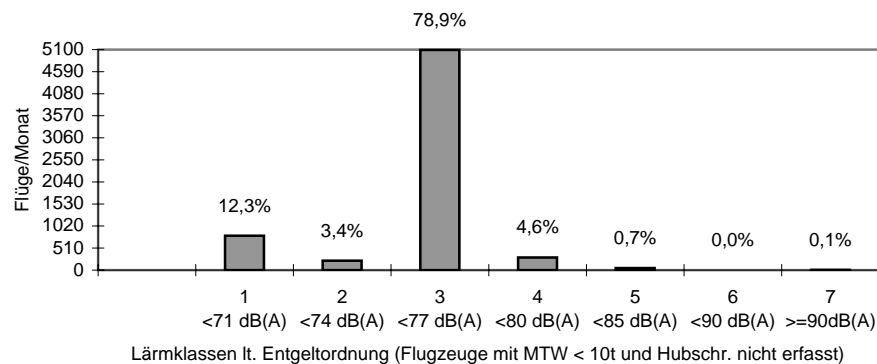
SXF Verteilung der Flüge auf Start-/Landebahnen und nach Tages-/Nachtzeit Oktober 2008 (ohne Hubschrauber)



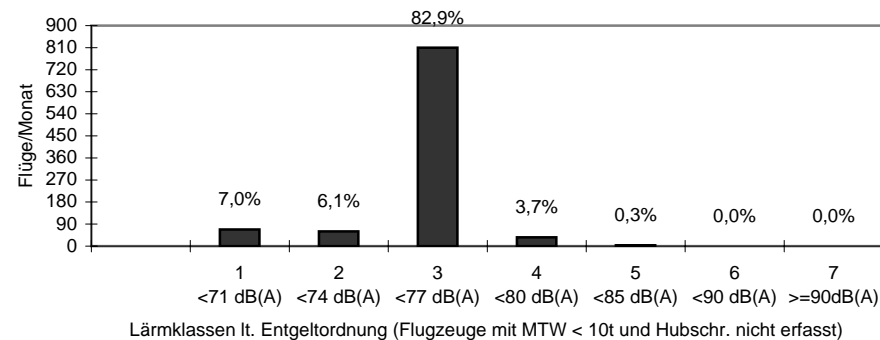
SXF Nachtflüge Oktober 2008



Verteilung der Flüge auf Lärmklassen (0 - 24 h) Oktober 2008

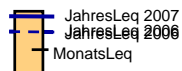


Verteilung der Nachtflüge auf Lärmklassen (22 - 6 h) Oktober 2008



SXF Äquivalenter Dauerschallpegel (q=4)

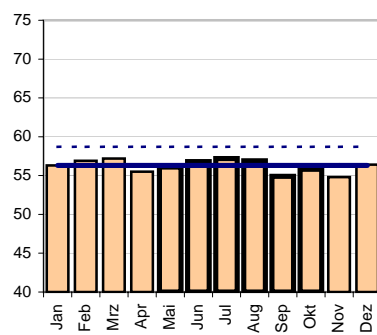
Jahresvergl. 2006/2007



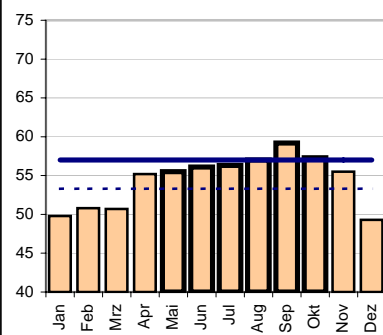
Stark umrandet: 6 verkehrsreichste Monate

*) Nach DIN 45643 unzuverlässig. Messwert wegen zu geringer Zahl erkannter Überflüge

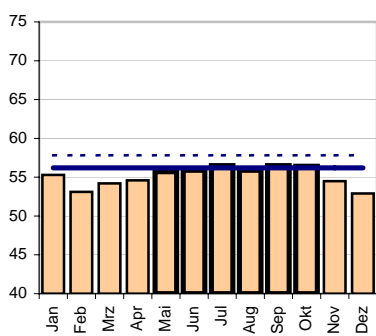
dB(A) Mst.1 JLeq:58,7 / 56,3dB(A)



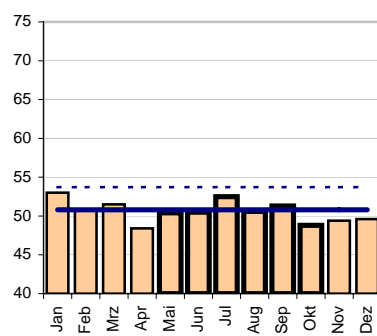
dB(A) Mst.2 JLeq:53,3 / 57,0dB(A)



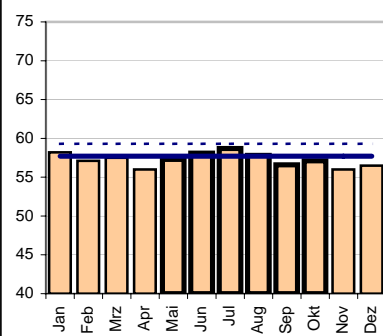
dB(A) Mst.3 JLeq:57,8 / 56,2dB(A)



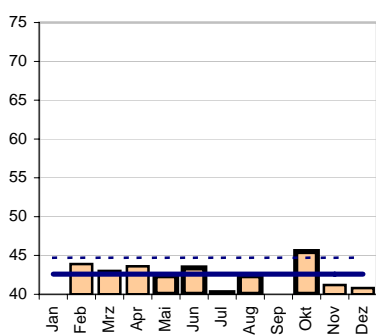
dB(A) Mst.4 JLeq:53,7 / 50,8dB(A)*)



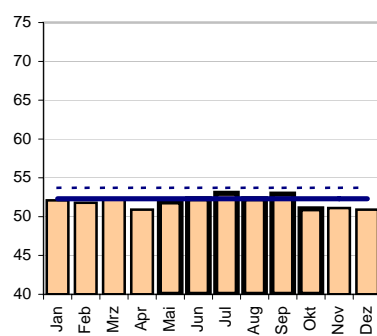
dB(A) Mst.5 JLeq:59,3 / 57,7dB(A)



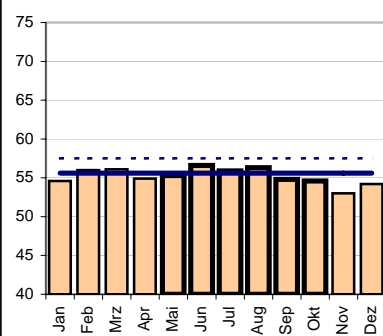
dB(A) Mst.6 JLeq:44,7 / 42,6dB(A)*)



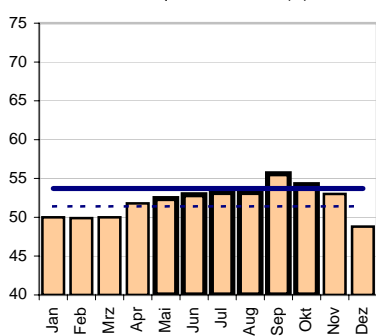
dB(A) Mst.7 JLeq:53,7 / 52,3dB(A)



dB(A) Mst.8 JLeq:57,5 / 55,6dB(A)*)



dB(A) Mst.9 JLeq:51,4 / 53,7dB(A)



SXF

Energieäquiv.
Dauerschallpegel (q=3)

Jahresvergl. 2006/2007

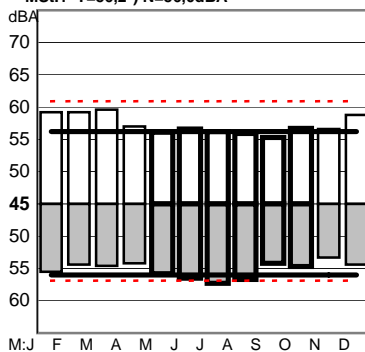
JLeq 2006 Tag(T)
JLeq 2007 Tag(T)

JLeq 2007 Nacht(N)
JLeq 2006 Nacht(N)

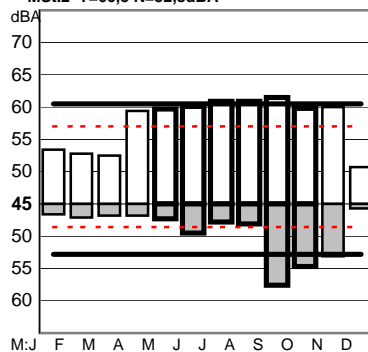
Stark umrandet: 6 verkehrsreichste Monate

*) Nach DIN 45643 unzuverläss. Messwert
wegen zu geringer Zahl erkannter Überflüge

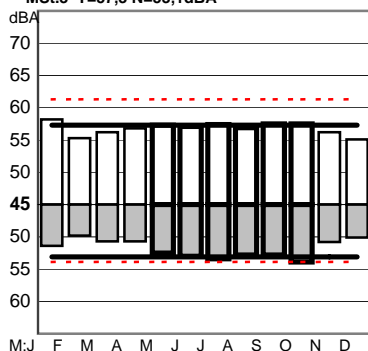
MSt.1 T=56,2*) N=56,0dBA



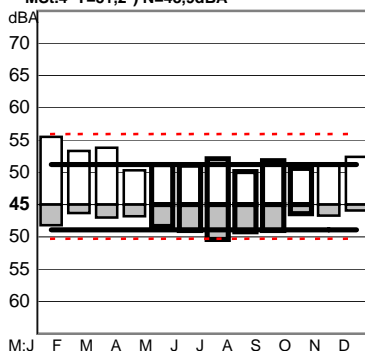
MSt.2 T=60,5 N=52,8dBA



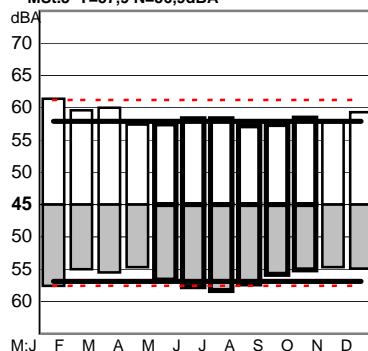
MSt.3 T=57,3 N=53,1dBA



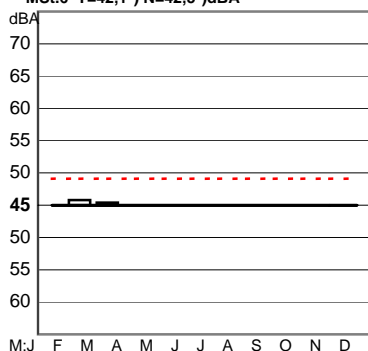
MSt.4 T=51,2*) N=48,9dBA



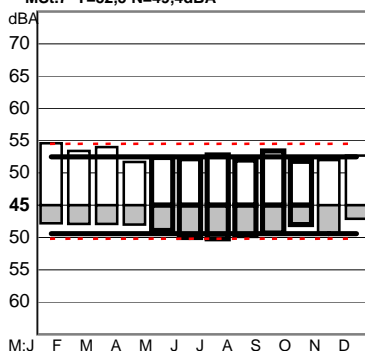
MSt.5 T=57,9 N=56,9dBA



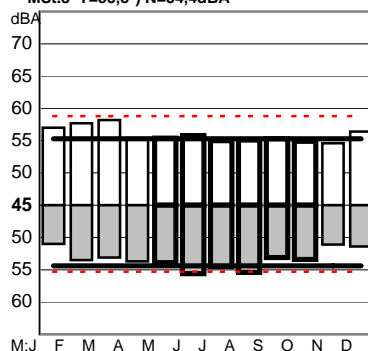
MSt.6 T=42,1*) N=42,5*)dBA



MSt.7 T=52,5 N=49,4dBA



MSt.8 T=55,3*) N=54,4dBA



MSt.9 T=56,2 N=49,9dBA

