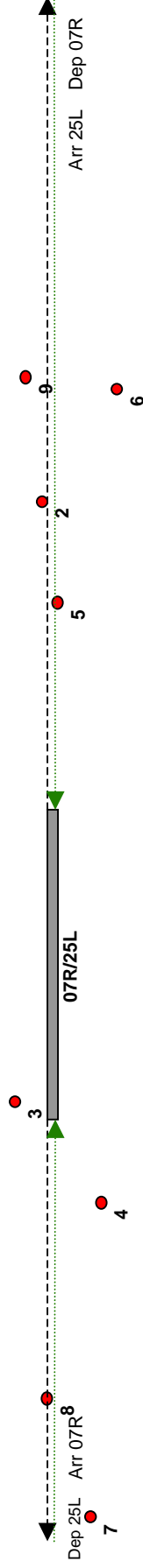
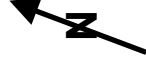


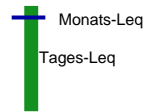
# Flughafen Berlin Schönefeld

Fluglärmbericht 2 / 2009

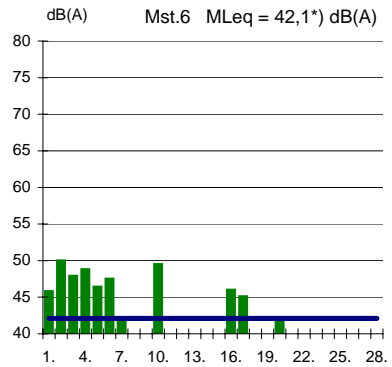
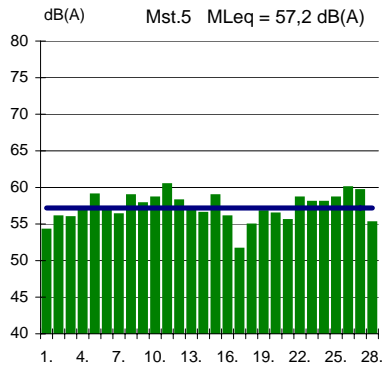
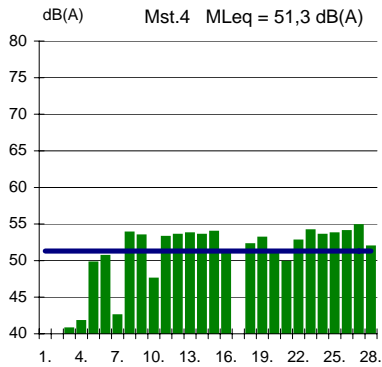
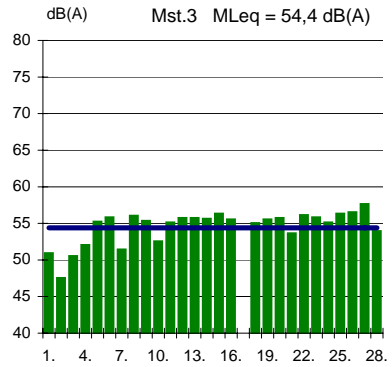
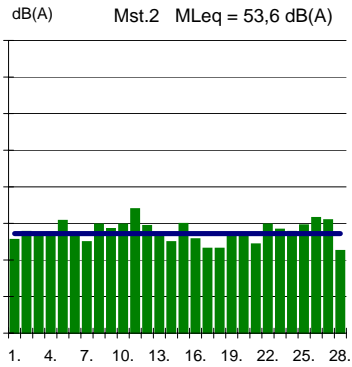


- |                       |            |                          |                        |
|-----------------------|------------|--------------------------|------------------------|
| 2 Bohnsdorf, Waldstr. | 4 Selchow  | 6 Waltersdf.,Waldsiedlg. | 8 Mahlow, Waldsiedl.   |
| 3 Wassmannsdorf       | 5 Hubertus | 7 Blankenfelde           | 9 Bohnsdorf, Fließstr. |

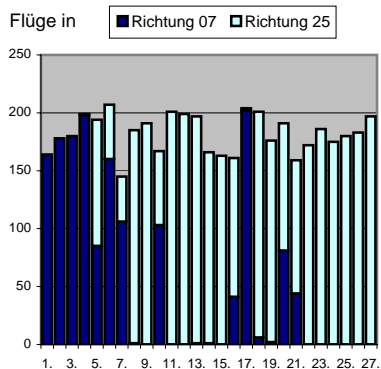
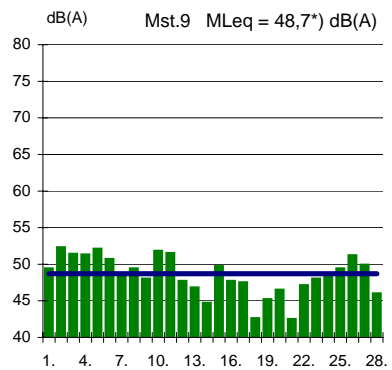
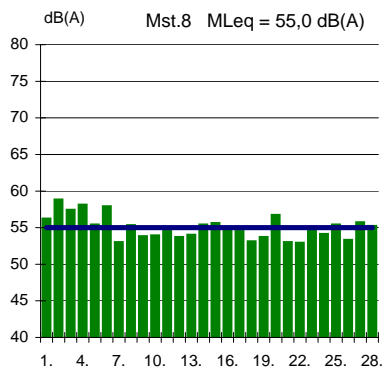
# SXF Äquivalenter Dauerschallpegel (q=4) Monat 2/2009



\*) Nach DIN 45643 unzuverlässiger Messwert wegen zu geringer Zahl erkannter Überflüge



Station 7 z.Zt.außer Betrieb



Wetterbedingte Ausfälle:

01.02.	183'	02.02.	577'
03.02.	60'	08.02.	9'
10.02.	8'	11.02.	593'
12.02.	11'	23.02.	8'
26.02.	359'	27.02.	117'

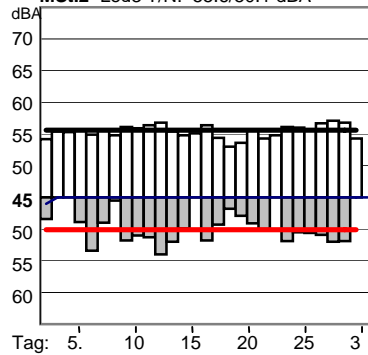
# SXF Energieäquiv. Dauerschallpegel (q=3)

Monat 2 / 2009

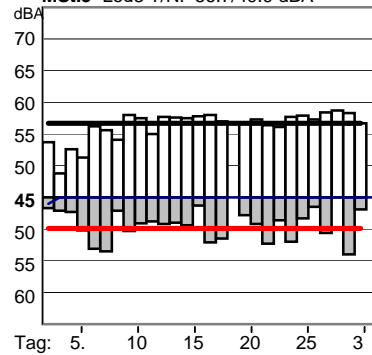


\*) Nach DIN 45643 unzuverlässig. Messwert wegen zu geringer Zahl erkannter Überflüge

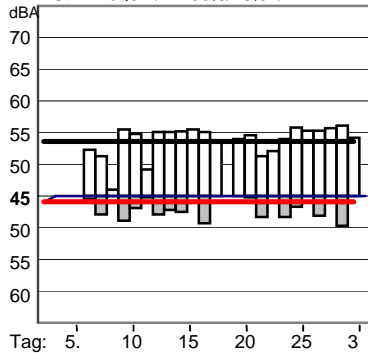
**MSt.2** Leq3 T/N: 55.6/50.1 dBA



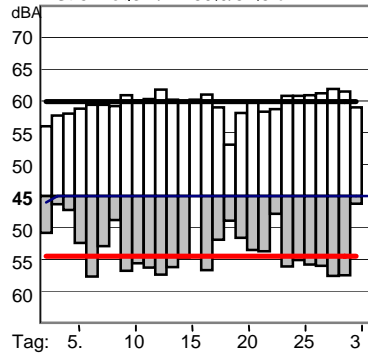
**MSt.3** Leq3 T/N: 56.7/49.9 dBA



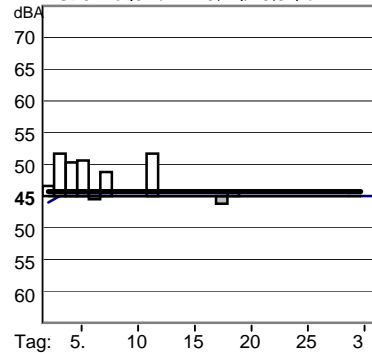
**MSt.4** Leq3 T/N: 53.6/45.9 dBA



**MSt.5** Leq3 T/N: 59.9/54.5 dBA

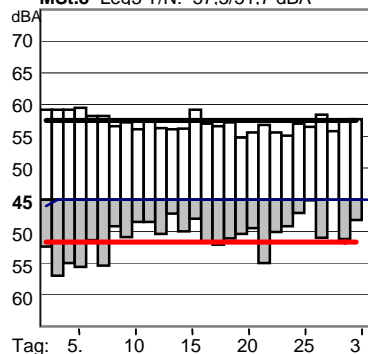


**MSt.6** Leq3 T/N: 45.7\*/40.3\*) dBA

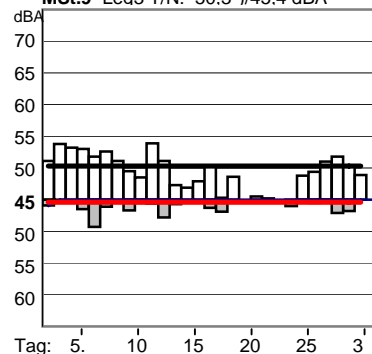


Station 7 z.Zt.außer Betrieb

**MSt.8** Leq3 T/N: 57.5/51.7 dBA



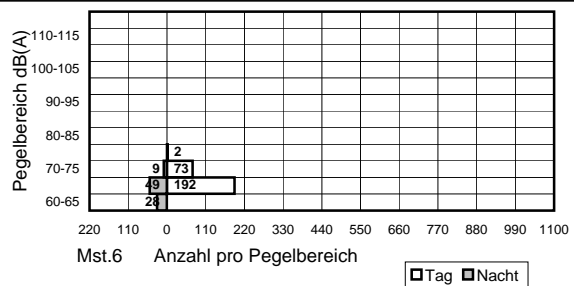
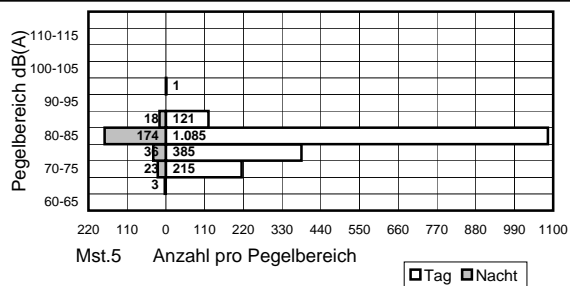
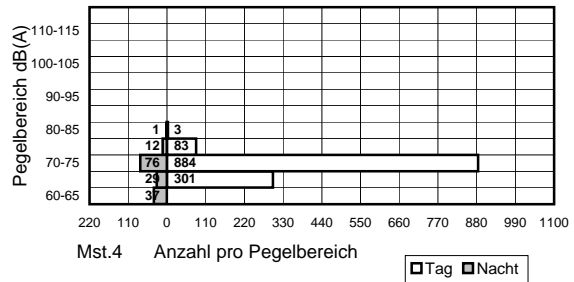
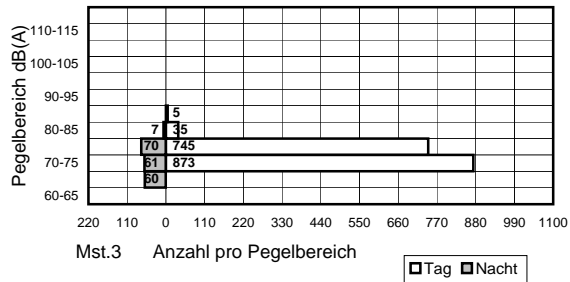
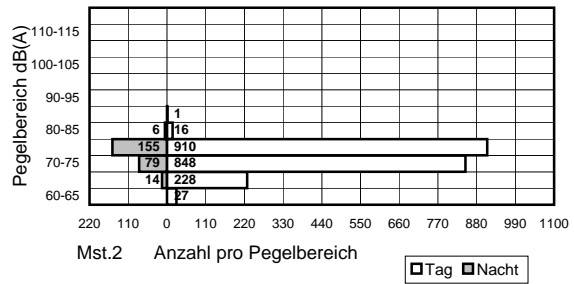
**MSt.9** Leq3 T/N: 50.3\*/45.4 dBA



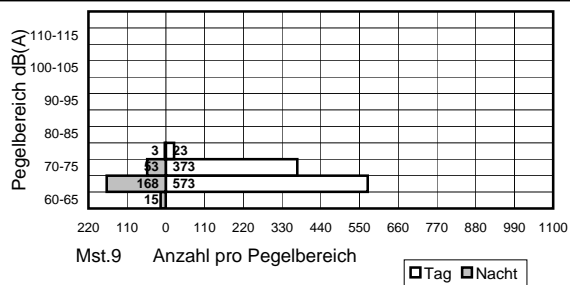
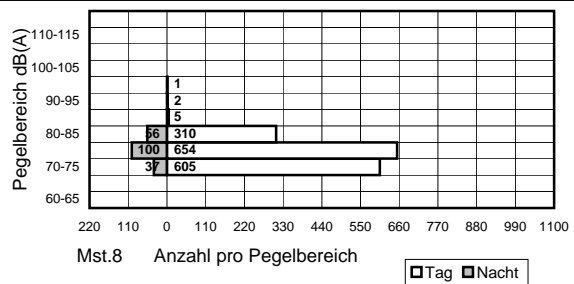
# SXF

Monat 2/2009

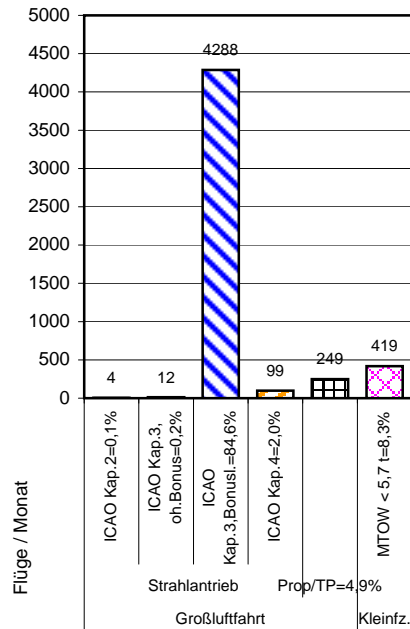
## Häufigkeitsverteilung der Maximalschallpegel



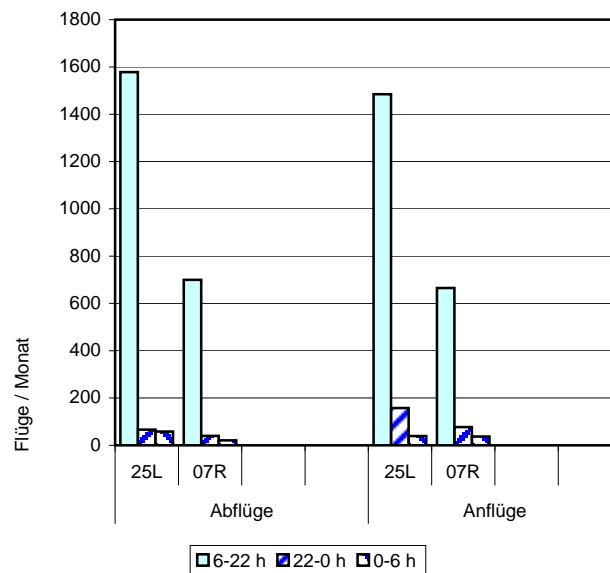
Station 7 z.Zt.außer Betrieb



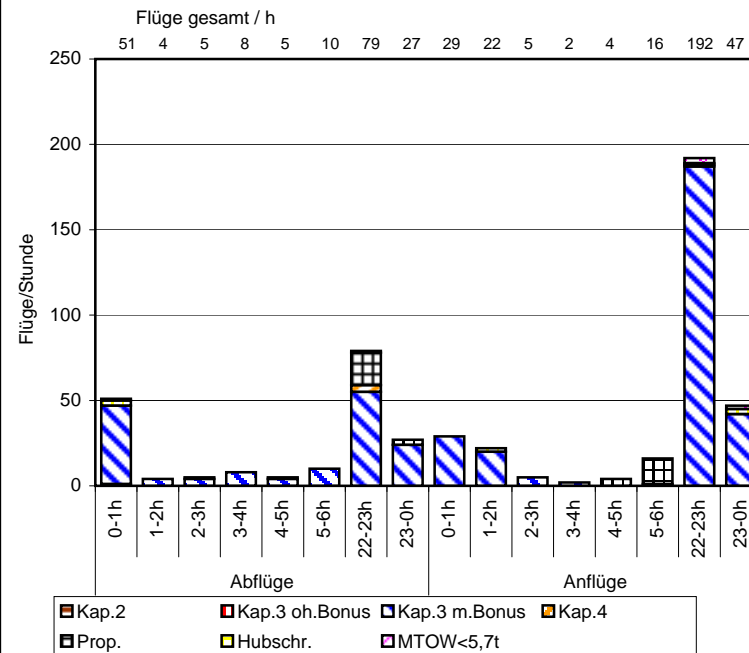
SXF Verteilung der Flüge nach ICAO-Lärmkategorien Februar 2009  
Gesamtanzahl Flüge: 5071



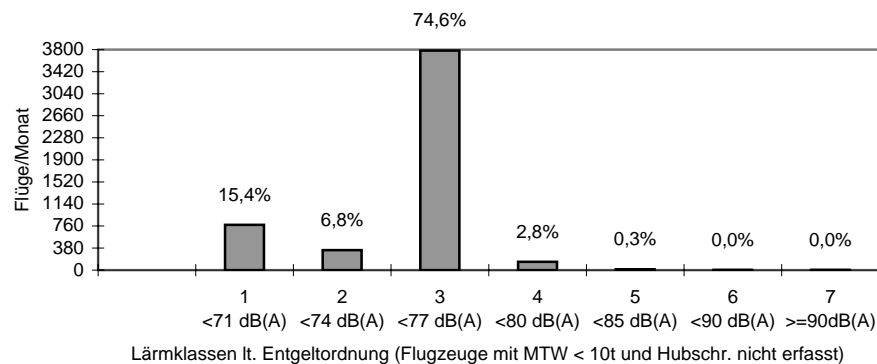
SXF Verteilung der Flüge auf Start-/Landebahnen und nach Tages-/Nachtzeit Februar 2009 (ohne Hubschrauber)



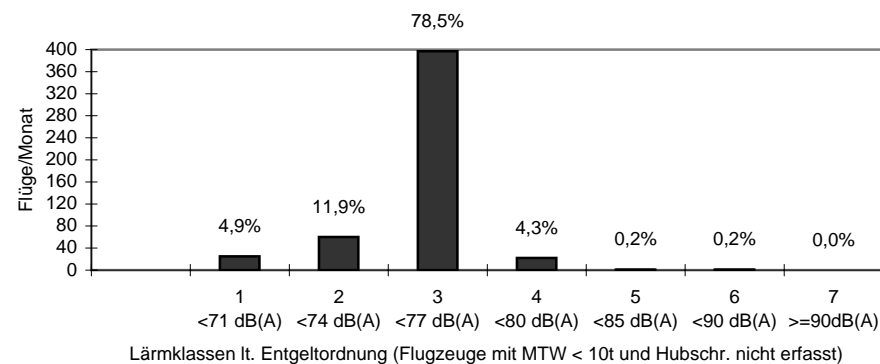
SXF Nachtfüge Februar 2009



Verteilung der Flüge auf Lärmklassen (0 - 24 h) Februar 2009

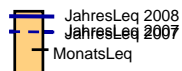


Verteilung der Nachtfüge auf Lärmklassen (22 - 6 h) Februar 2009



# SXF Äquivalenter Dauerschallpegel (q=4)

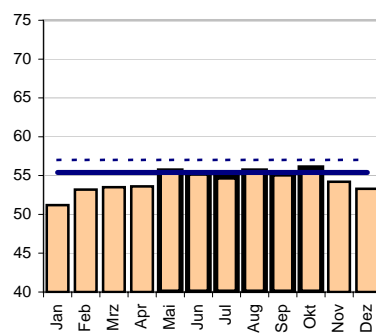
## Jahresvergl. 2007/2008



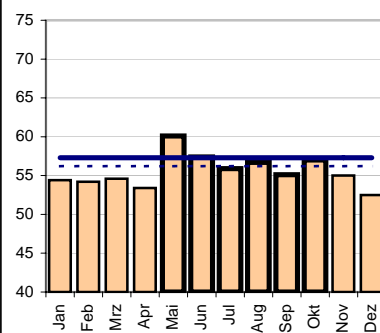
Stark umrandet: 6 verkehrsreichste Monate

\*) Nach DIN 45643 unzuverlässig. Messwert wegen zu geringer Zahl erkannter Überflüge

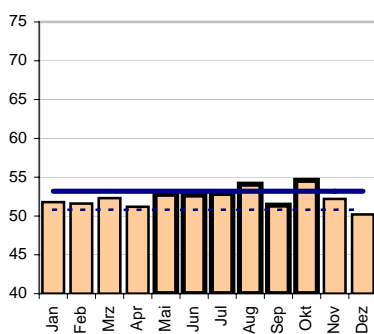
dB(A) Mst.2 JLeq:57,0 / 55,4dB(A)



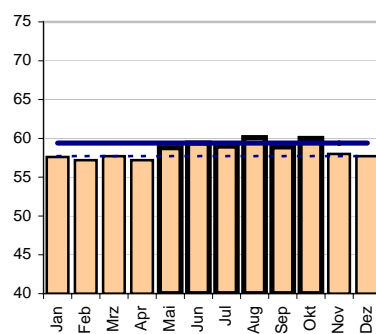
dB(A) Mst.3 JLeq:56,2 / 57,3dB(A)



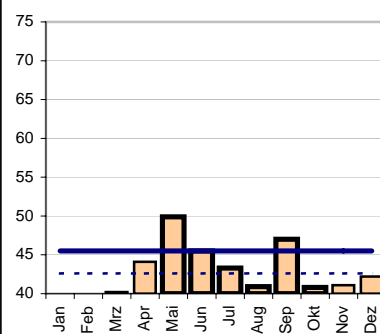
dB(A) Mst.4 JLeq:50,8 / 53,2dB(A)



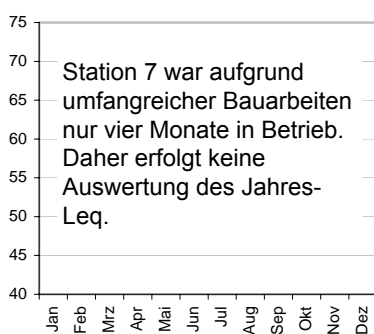
dB(A) Mst.5 JLeq:57,7 / 59,4dB(A)



dB(A) Mst.6 JLeq:42,6 / 45,5dB(A)\*

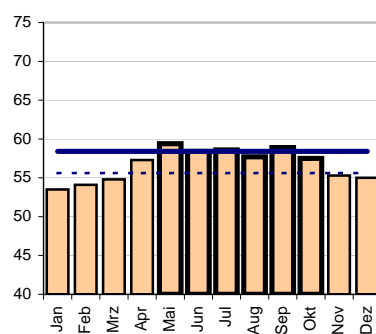


dB(A) Mst.7 JLeq:52,3 / 0,0dB(A)\*

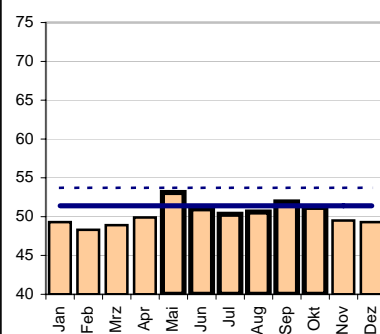


Station 7 war aufgrund umfangreicher Bauarbeiten nur vier Monate in Betrieb. Daher erfolgt keine Auswertung des Jahres-Leq.

dB(A) Mst.8 JLeq:55,6 / 58,4dB(A)



dB(A) Mst.9 JLeq:53,7 / 51,4dB(A)



# SXF

Energieäquiv.  
Dauerschallpegel (q=3)

Jahresvergl. 2007/2008

JLeq 2007 Tag(T)  
JLeq 2008 Tag(T)

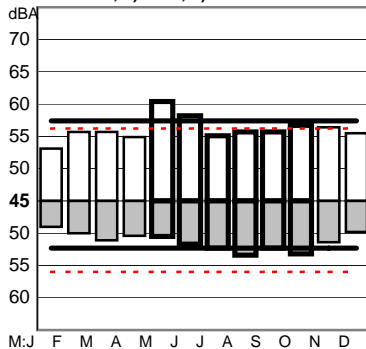


JLeq 2008 Nacht(N)  
JLeq 2007 Nacht(N)

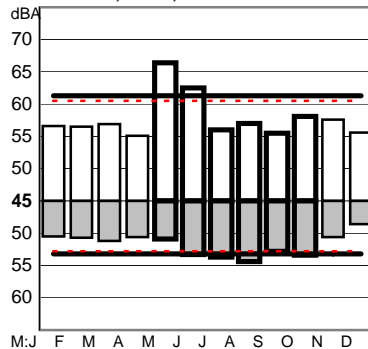
Stark umrandet: 6 verkehrsreichste Monate

\*) Nach DIN 45643 unzuverlässig. Messwert  
wegen zu geringer Zahl erkannter Überflüge

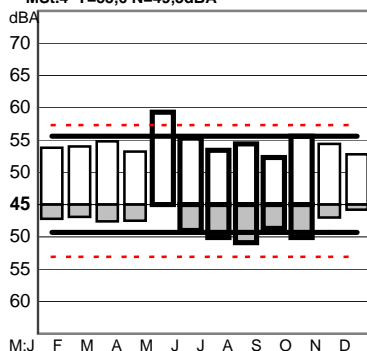
MSt.2 T=57,4\*) N=52,3\*)dBA



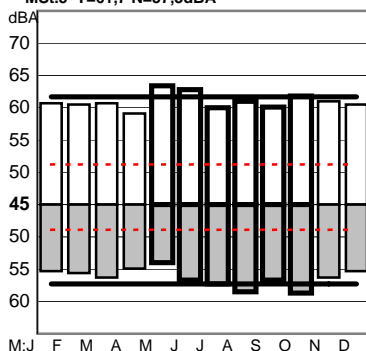
MSt.3 T=61,3 N=53,2dBA



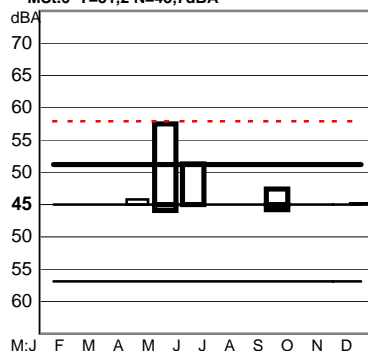
MSt.4 T=55,6 N=49,3dBA



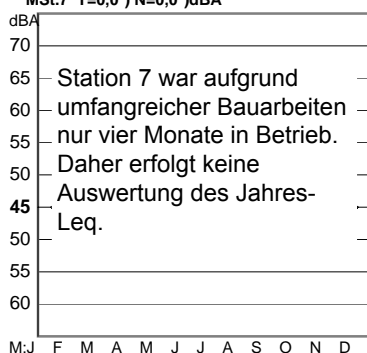
MSt.5 T=61,7 N=57,3dBA



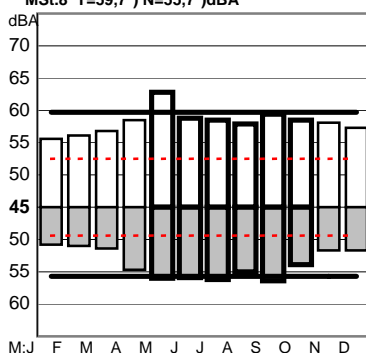
MSt.6 T=51,2 N=43,7dBA



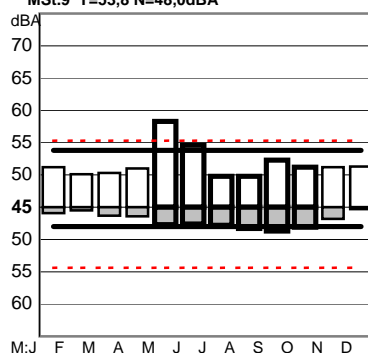
MSt.7 T=0,0\*) N=0,0\*)dBA



MSt.8 T=59,7\*) N=55,7\*)dBA



MSt.9 T=53,8 N=48,0dBA



Station 7 war aufgrund  
umfangreicher Bauarbeiten  
nur vier Monate in Betrieb.  
Daher erfolgt keine  
Auswertung des Jahres-  
Leq.