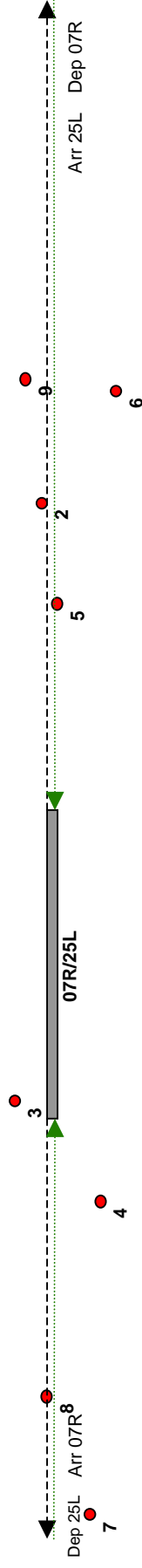


# Flughafen Berlin Schönefeld

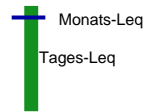
Fluglärmbericht 5 / 2010



Dep 25L Arr 07R<sup>8</sup> Arr 25L Dep 07R

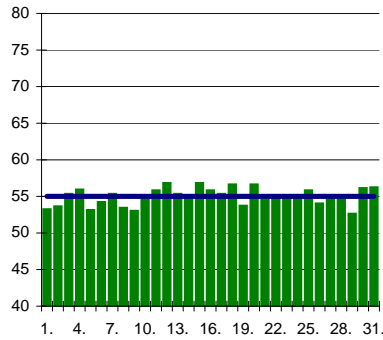
- |                       |            |                          |                        |
|-----------------------|------------|--------------------------|------------------------|
| 2 Bohnsdorf, Waldstr. | 4 Selchow  | 6 Waltersdf.,Waldsiedlg. | 8 Mahlow, Waldsiedl.   |
| 3 Wassmannsdorf       | 5 Hubertus | 7 Blankenfelde           | 9 Bohnsdorf, Fließstr. |

# SXF Äquivalenter Dauerschallpegel (q=4) Monat 5/2010

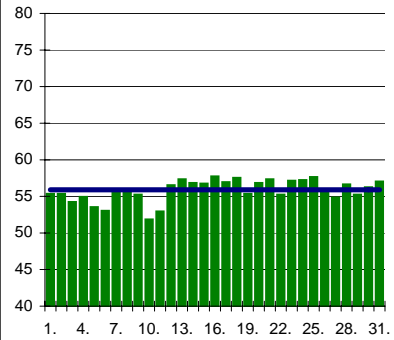


\*) Nach DIN 45643 unzuverlässiger Messwert wegen zu geringer Zahl erkannter Überflüge

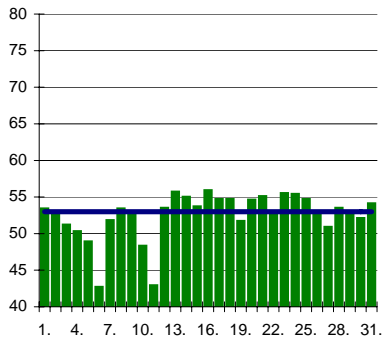
dB(A) Mst.2 MLeq = 55,0 dB(A)



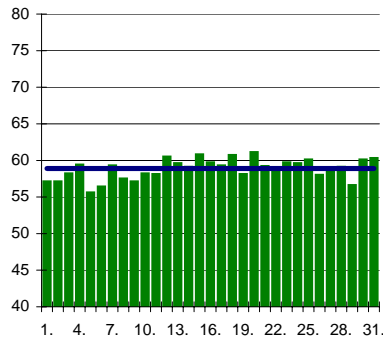
dB(A) Mst.3 MLeq = 55,9 dB(A)



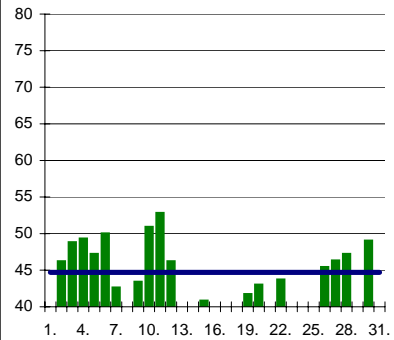
dB(A) Mst.4 MLeq = 53,0 dB(A)



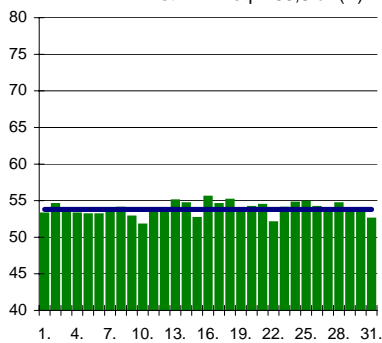
dB(A) Mst.5 MLeq = 58,9 dB(A)



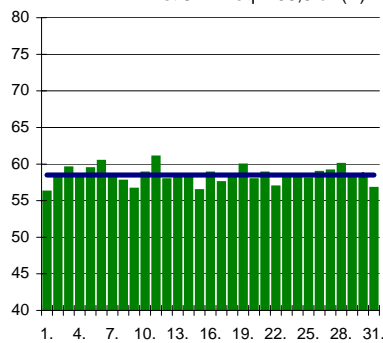
dB(A) Mst.6 MLeq = 44,7\* dB(A)



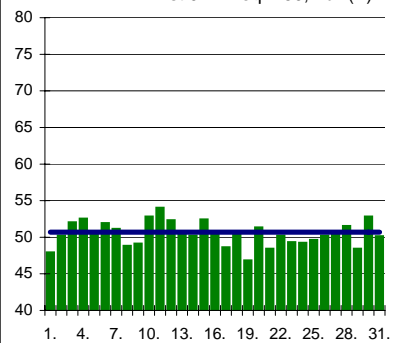
dB(A) Mst.7 MLeq = 53,8 dB(A)



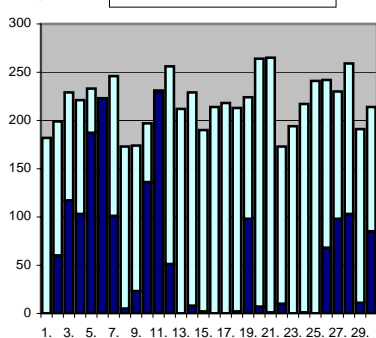
dB(A) Mst.8 MLeq = 58,5 dB(A)



dB(A) Mst.9 MLeq = 50,7 dB(A)



Flüge in Richtung 07 Richtung 25



## Techn. Ausfälle:

03.05. M2 4'  
04.05. M8 15'  
15.05. M3 7'

21.05. M2 35'

## Wetterbedingte Ausfälle:

06.05. 307' 15.05. 29'  
16.05. 44' 17.05. 33'  
18.05. 144' 24.05. 8'  
25.05. 170'

# SXF Energieäquiv.

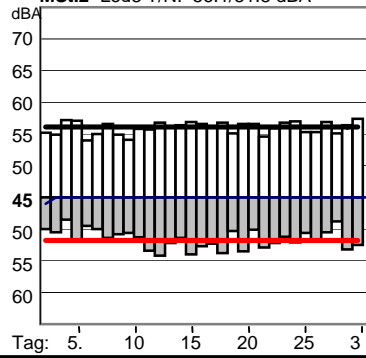
## Dauerschallpegel (q=3)

Monat 5 / 2010

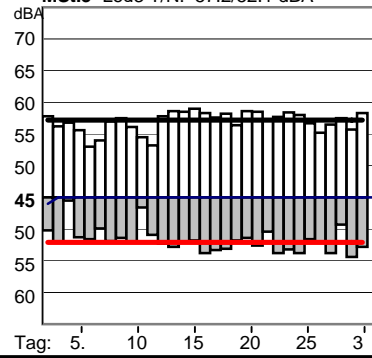


\*) Nach DIN 45643 unzuverlässig. Messwert wegen zu geringer Zahl erkannter Überflüge

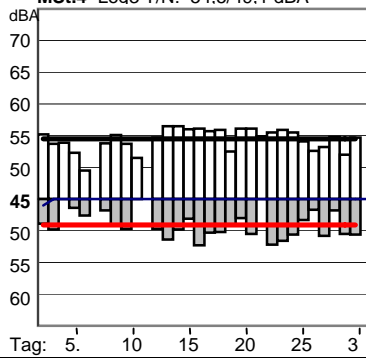
**MSt.2** Leq3 T/N: 56.1/51.8 dBA



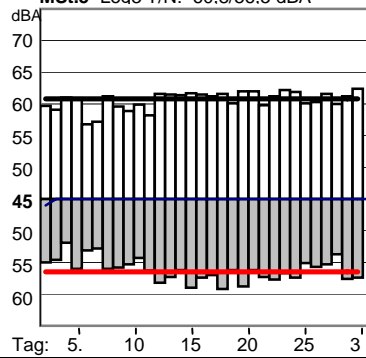
**MSt.3** Leq3 T/N: 57.2/52.1 dBA



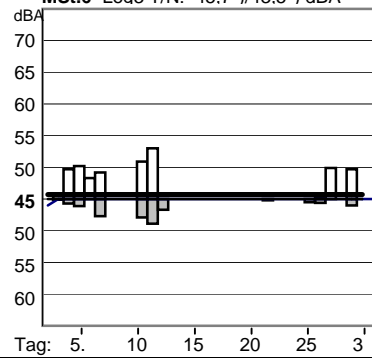
**MSt.4** Leq3 T/N: 54.5/49.1 dBA



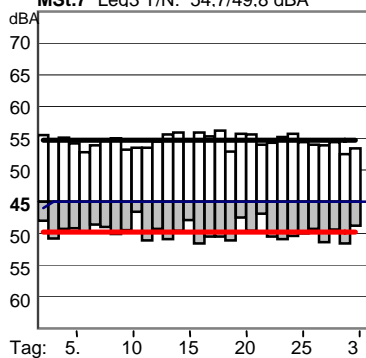
**MSt.5** Leq3 T/N: 60.8/56.5 dBA



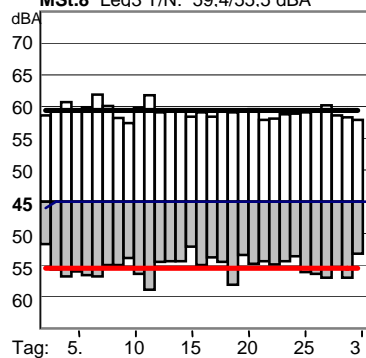
**MSt.6** Leq3 T/N: 45.7\*/43.5\*) dBA



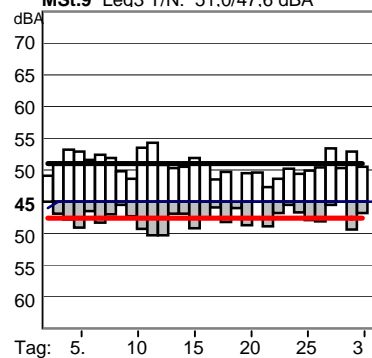
**MSt.7** Leq3 T/N: 54.7/49.8 dBA



**MSt.8** Leq3 T/N: 59.4/55.5 dBA



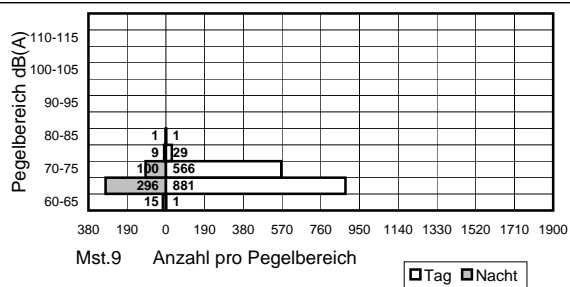
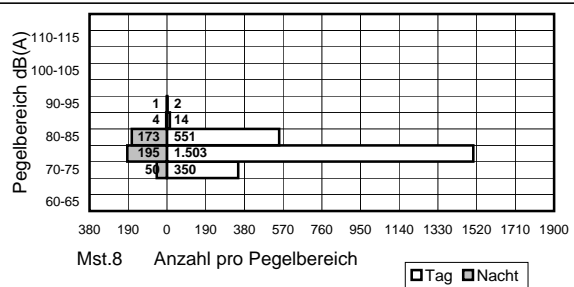
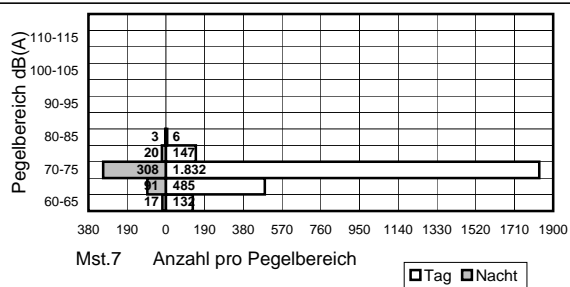
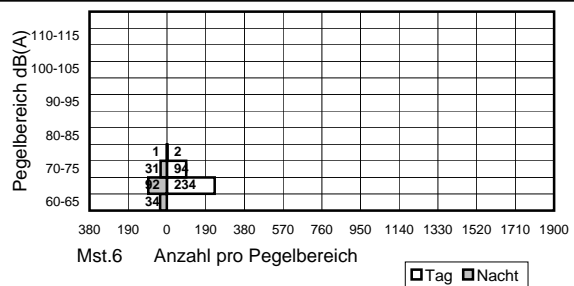
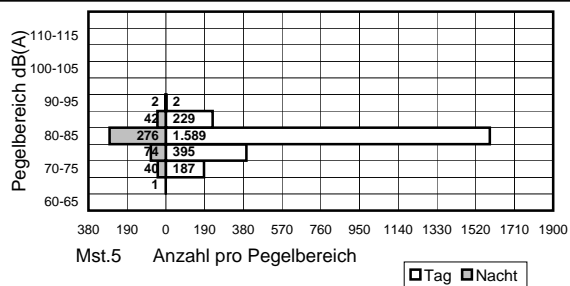
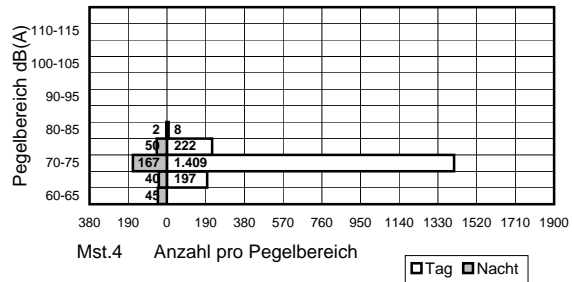
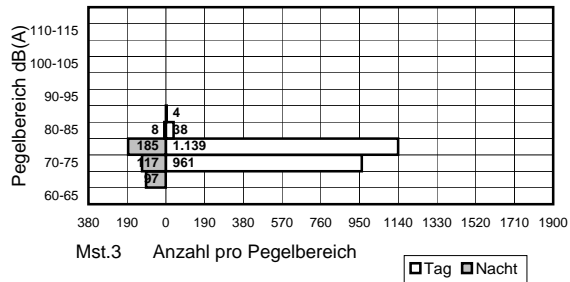
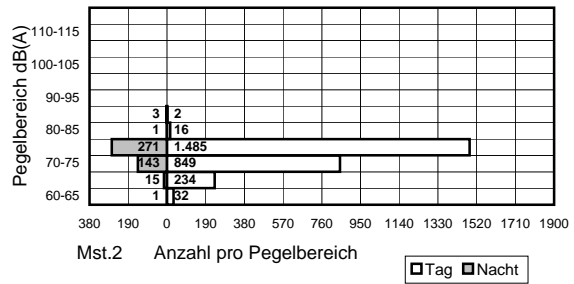
**MSt.9** Leq3 T/N: 51.0/47.6 dBA



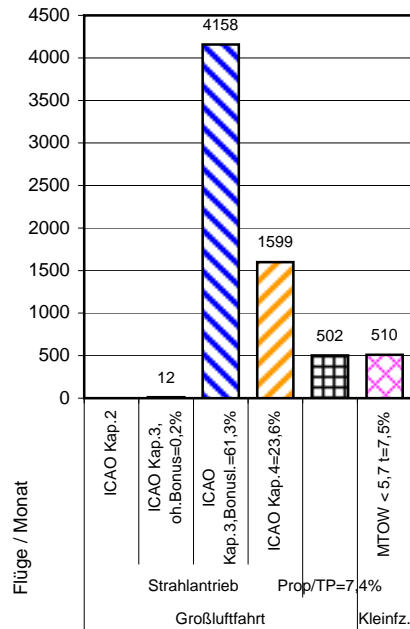
# SXF

Monat 5/2010

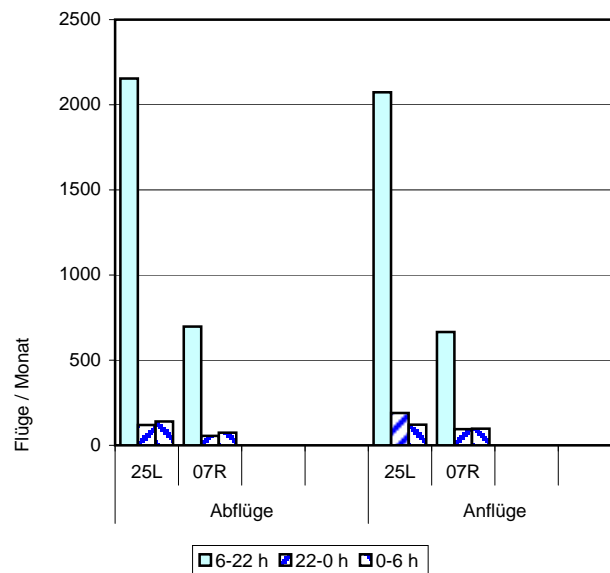
## Häufigkeitsverteilung der Maximalschallpegel



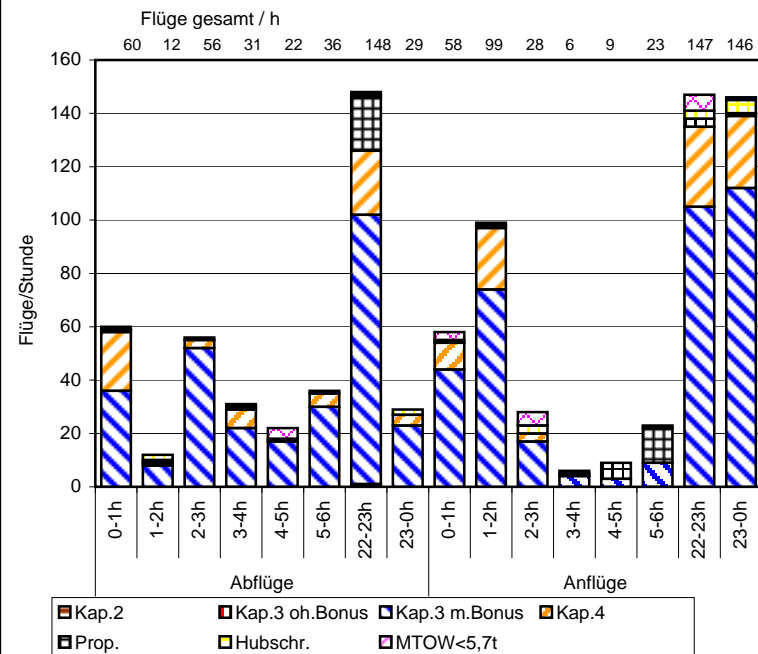
SXF Verteilung der Flüge nach ICAO-Lärmkategorien Mai 2010  
Gesamtanzahl Flüge: 6781



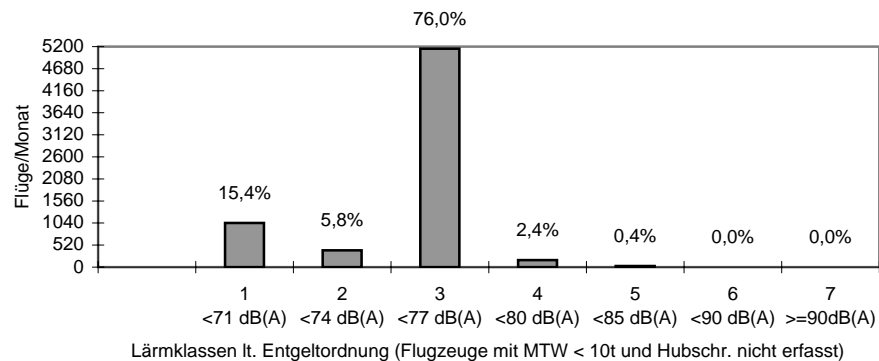
SXF Verteilung der Flüge auf Start-/Landebahnen und nach Tages-/Nachtzeit Mai 2010 (ohne Hubschrauber)



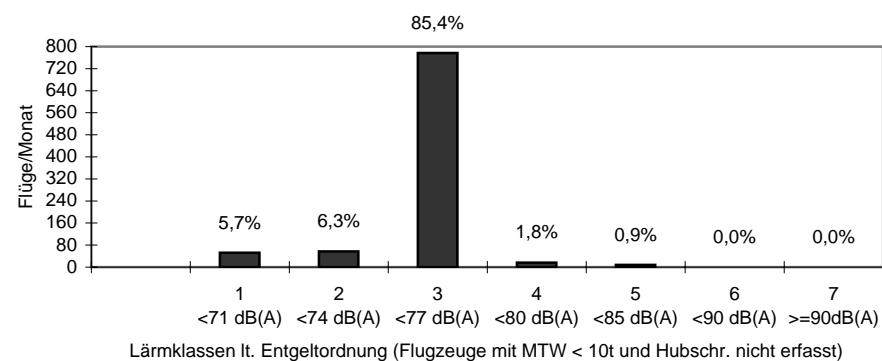
SXF Nachtflüge Mai 2010



Verteilung der Flüge auf Lärmklassen (0 - 24 h) Mai 2010



Verteilung der Nachtflüge auf Lärmklassen (22 - 6 h) Mai 2010



# SXF Äquivalenter Dauerschallpegel (q=4)

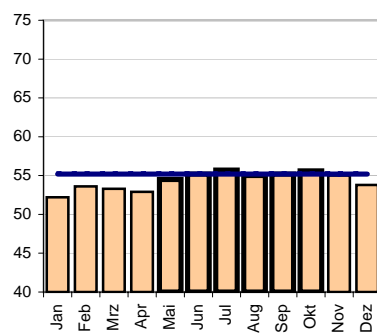
## Jahresvergl. 2008/2009



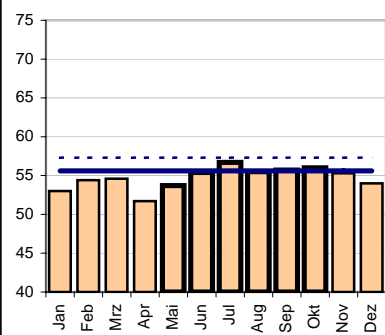
Stark umrandet: 6 verkehrsreichste Monate

\*) Nach DIN 45643 unzuverlässig. Messwert wegen zu geringer Zahl erkannter Überflüge

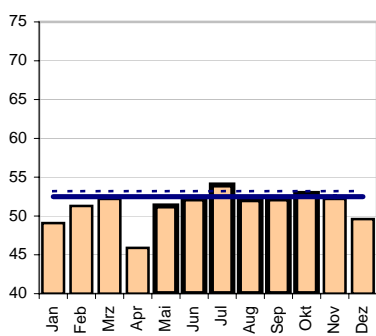
dB(A) Mst.2 JLeq:55,4 / 55,2dB(A)



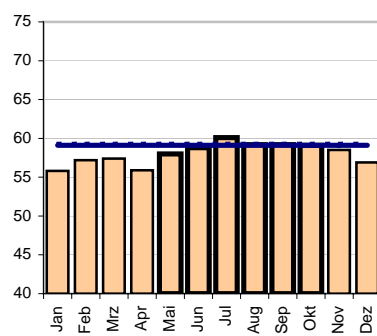
dB(A) Mst.3 JLeq:57,3 / 55,6dB(A)



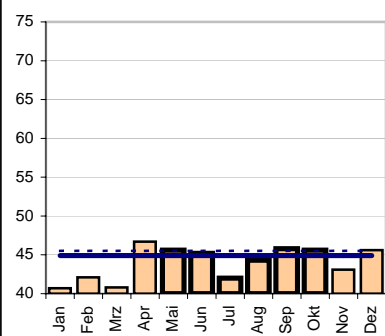
dB(A) Mst.4 JLeq:53,2 / 52,5dB(A)



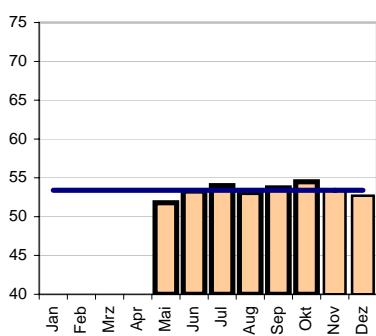
dB(A) Mst.5 JLeq:59,4 / 59,1dB(A)



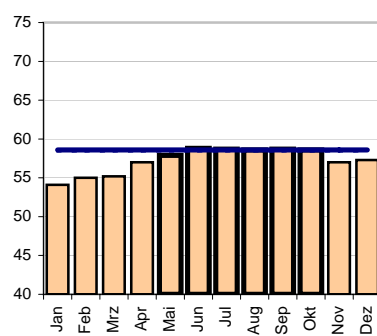
dB(A) Mst.6 JLeq:45,5 / 44,9dB(A)\*



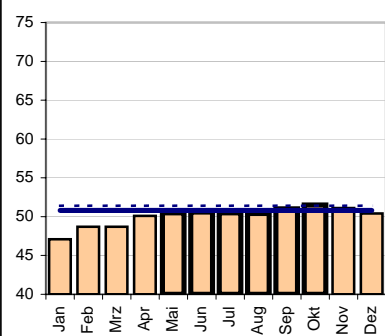
dB(A) Mst.7 JLeq:0,0 / 53,4dB(A)



dB(A) Mst.8 JLeq:58,4 / 58,6dB(A)



dB(A) Mst.9 JLeq:51,4 / 50,8dB(A)



# SXF

Energieäquiv.  
Dauerschallpegel (q=3)

Jahresvergl. 2008/2009

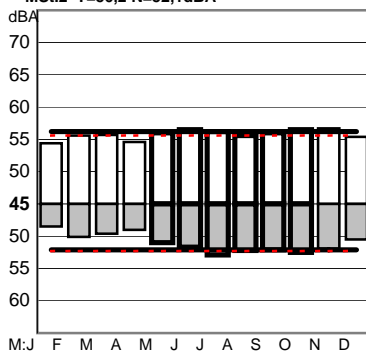
JLeq 2008 Tag(T)  
JLeq 2009 Tag(T)

JLeq 2009 Nacht(N)  
JLeq 2008 Nacht(N)

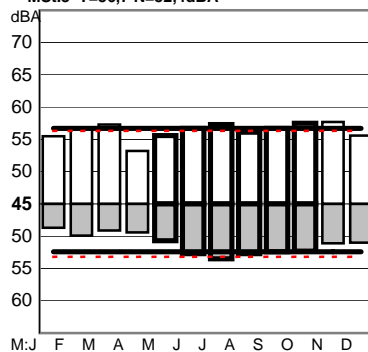
Stark umrandet: 6 verkehrsreichste Monate

\*) Nach DIN 45643 unzuverläss. Messwert  
wegen zu geringer Zahl erkannter Überflüge

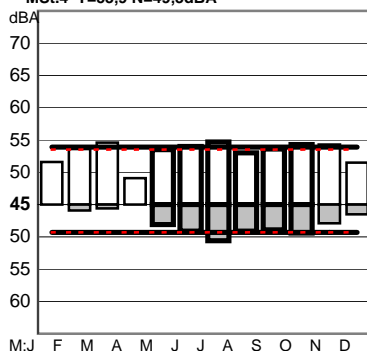
MSt.2 T=56,2 N=52,1dBA



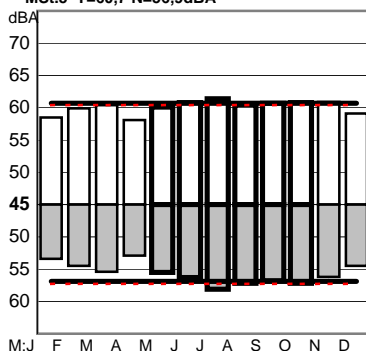
MSt.3 T=56,7 N=52,4dBA



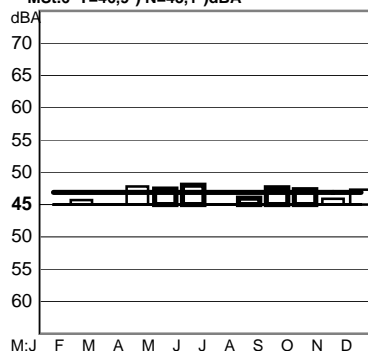
MSt.4 T=53,9 N=49,3dBA



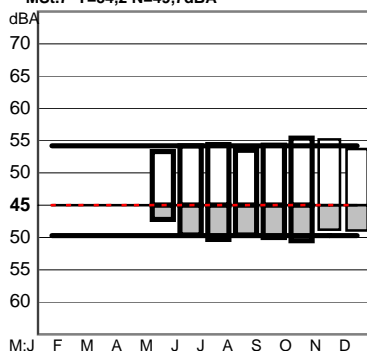
MSt.5 T=60,7 N=56,9dBA



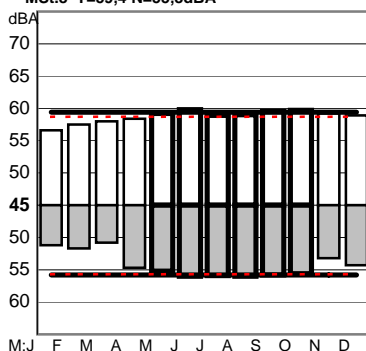
MSt.6 T=46,9\*) N=43,1\*)dBA



MSt.7 T=54,2 N=49,7dBA



MSt.8 T=59,4 N=55,8dBA



MSt.9 T=51,3\*) N=47,5dBA

