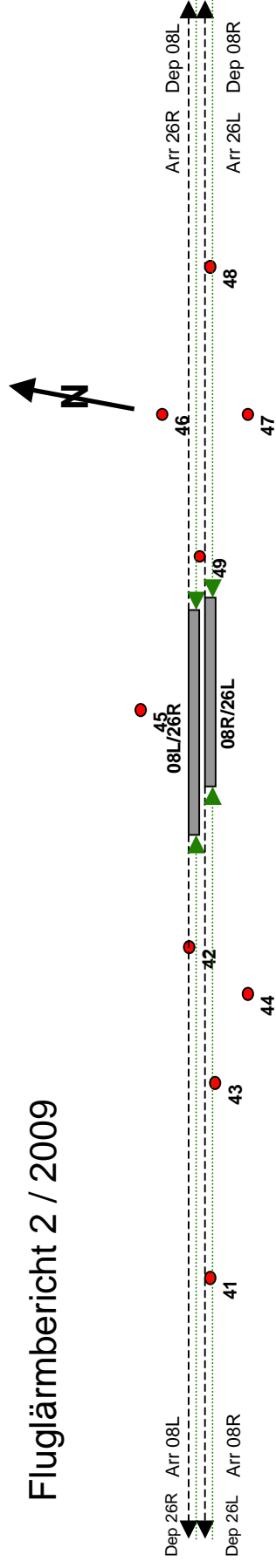


Flughafen Berlin Tegel

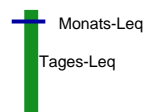
Fluglärmbericht 2 / 2009



41 Recklinghauser Weg 43 Lynar-Krkhs. 45 Seidelstr. 47 Oxford Str. 49 Meteorstr.

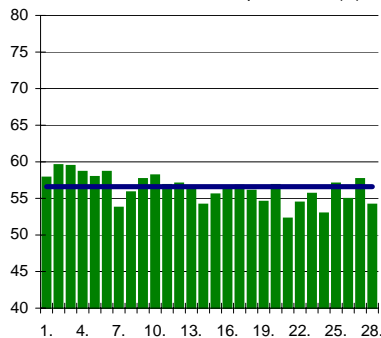
42 Wasserwerk Tegel 44 Lüdenscheider Weg 46 Teichstr. 48 Schwartzstr.

TXL Äquivalenter Dauerschallpegel (q=4) Monat 2/2009

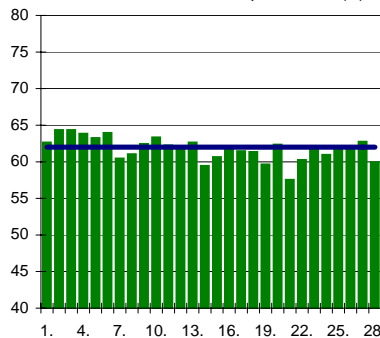


*) Nach DIN 45643 unzuverlässig. Messwert wegen zu geringer Zahl erkannter Überflüge

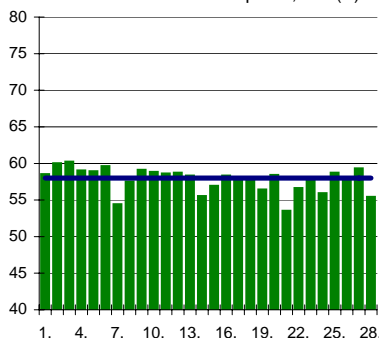
dB(A) Mst.41 MLeq = 56,6 dB(A)



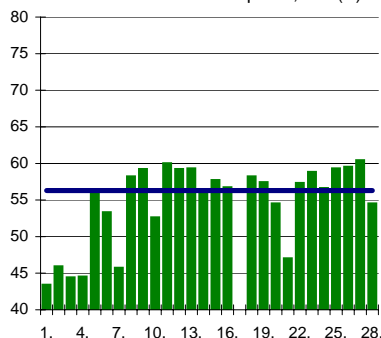
dB(A) Mst.42 MLeq = 62,0 dB(A)



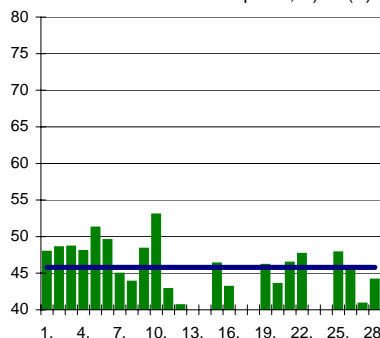
dB(A) Mst.43 MLeq = 58,0 dB(A)



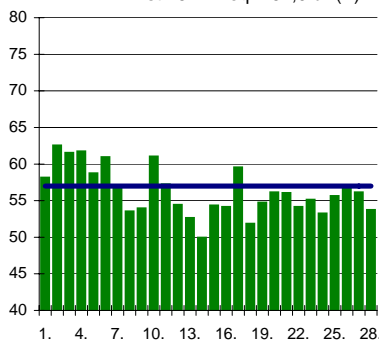
dB(A) Mst.44 MLeq = 56,3 dB(A)



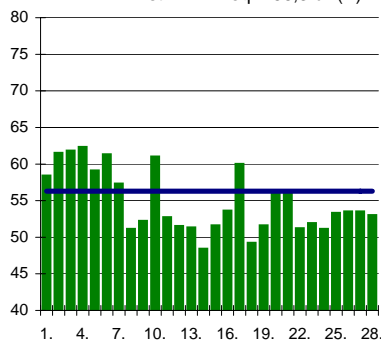
dB(A) Mst.45 MLeq = 45,8* dB(A)



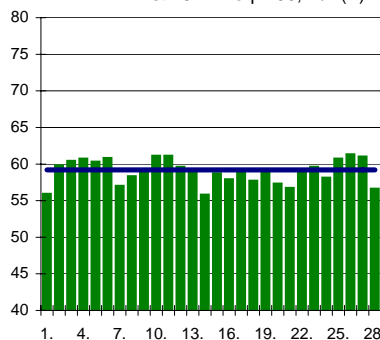
dB(A) Mst.46 MLeq = 57,0 dB(A)



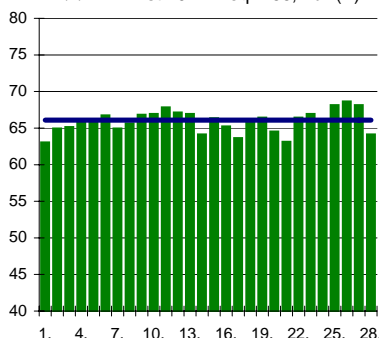
dB(A) Mst.47 MLeq = 56,3 dB(A)



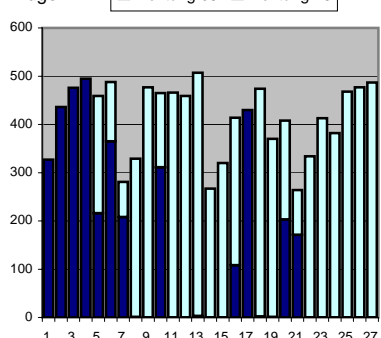
dB(A) Mst.48 MLeq = 59,2 dB(A)



dB(A) Mst.49 MLeq = 66,1 dB(A)



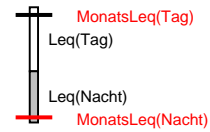
Flüge in Richtung 08 Richtung 26



Wetterbedingte Ausfälle:
01.02. 209' 02.02. 523'
03.02. 6' 11.02. 30'
26.02. 265'

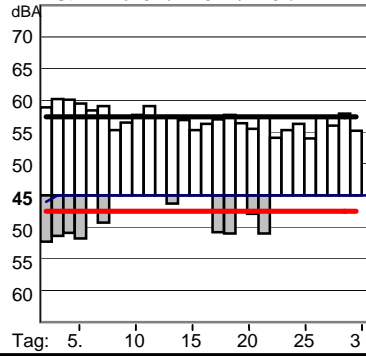
TXL Energieäquiv. Dauerschallpegel (q=3)

Monat 2 / 2009

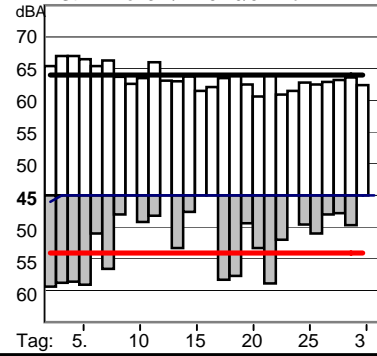


*) Nach DIN 45643 unzuverlässig. Messwert wegen zu geringer Zahl erkannter Überflüge

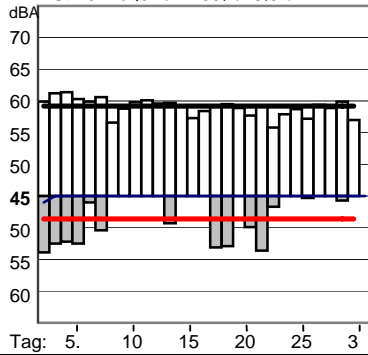
MSt.41 Leq3 T/N: 57.4/47.5 dBA



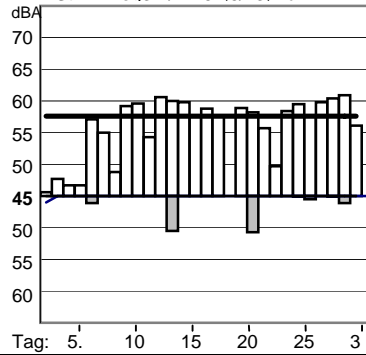
MSt.42 Leq3 T/N: 64.0/54.1 dBA



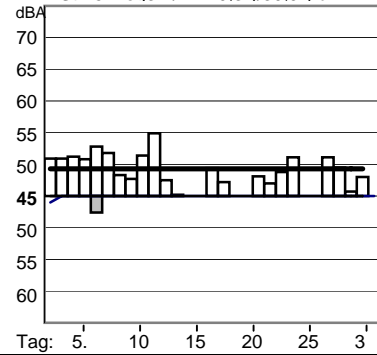
MSt.43 Leq3 T/N: 59.2/48.6 dBA



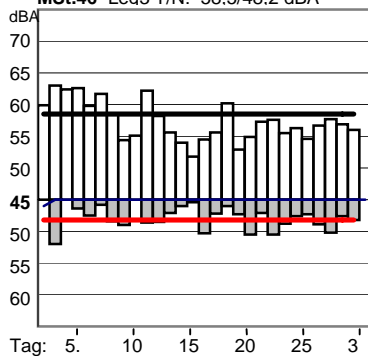
MSt.44 Leq3 T/N: 57.6/43.2 dBA



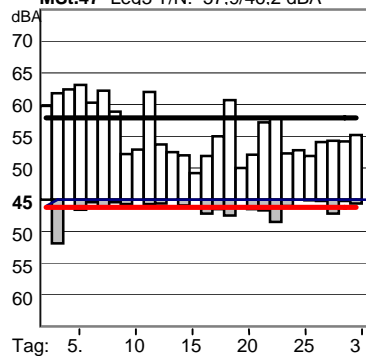
MSt.45 Leq3 T/N: 49.3*/39.9*) dBA



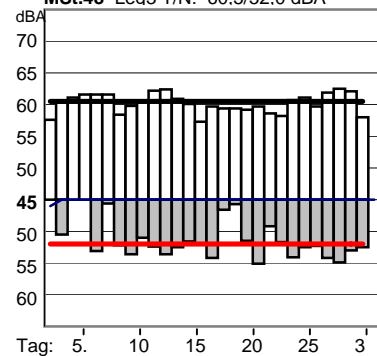
MSt.46 Leq3 T/N: 58.5/48.2 dBA



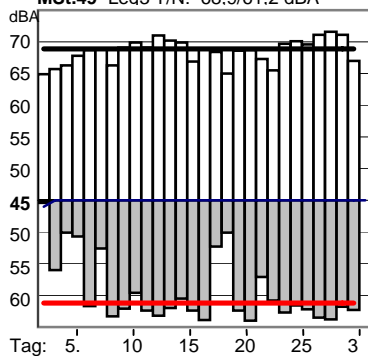
MSt.47 Leq3 T/N: 57.9/46.2 dBA



MSt.48 Leq3 T/N: 60.5/52.0 dBA



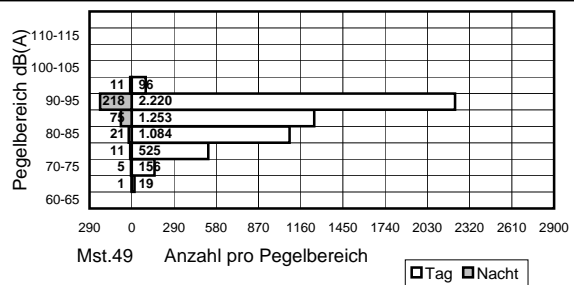
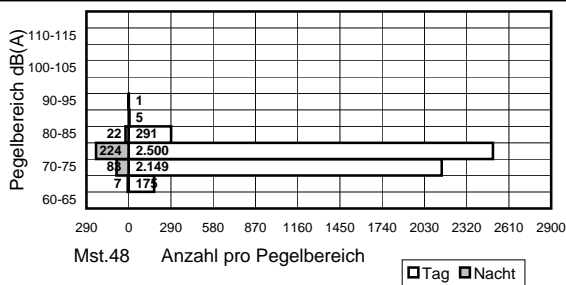
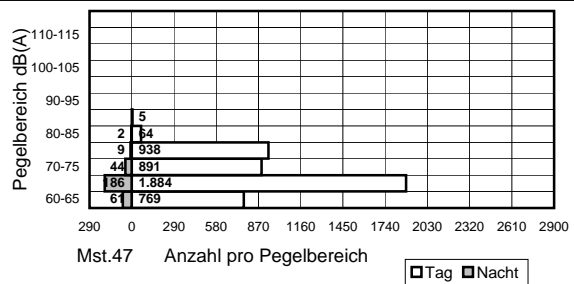
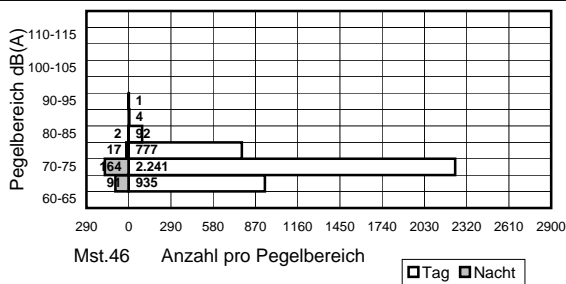
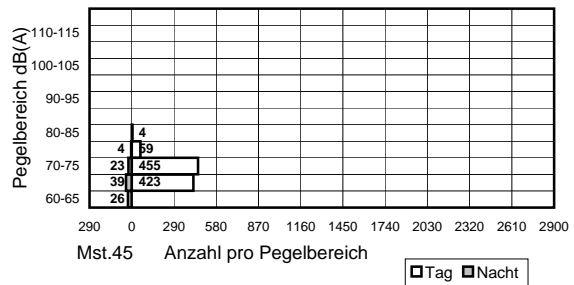
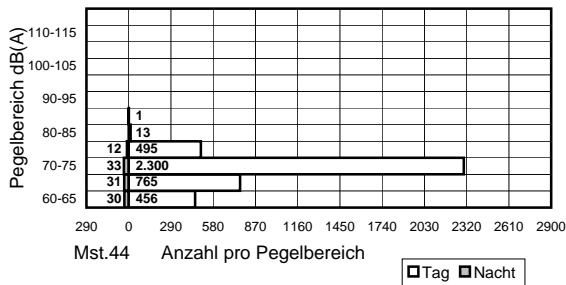
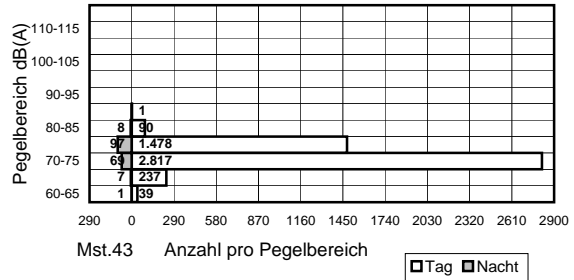
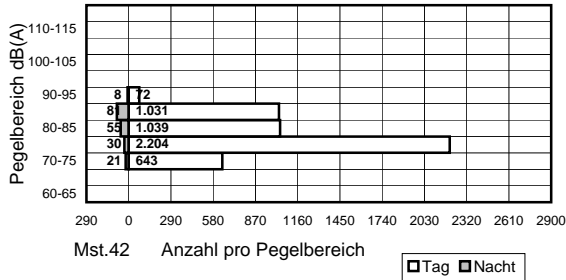
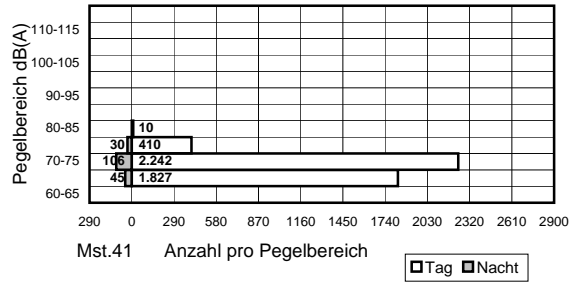
MSt.49 Leq3 T/N: 68.9/61.2 dBA



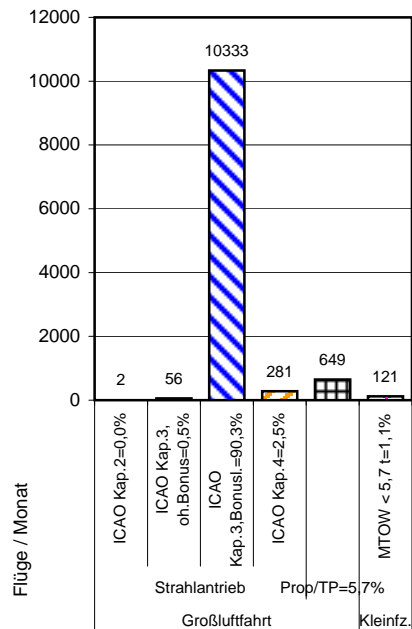
TXL

Monat 2/2009

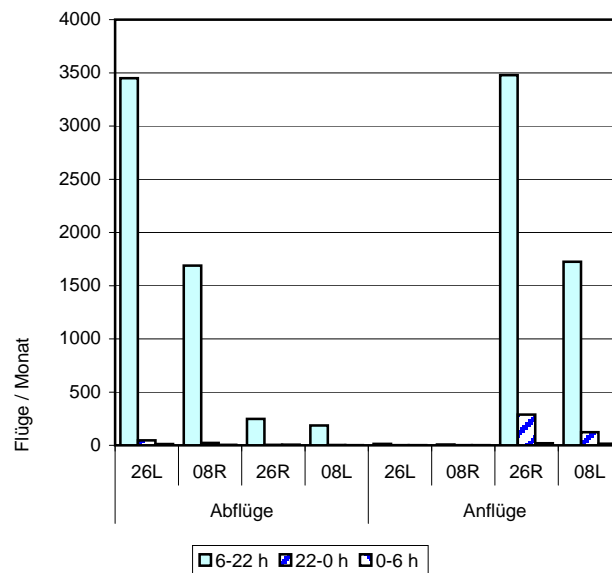
Häufigkeitsverteilung der Maximalschallpegel



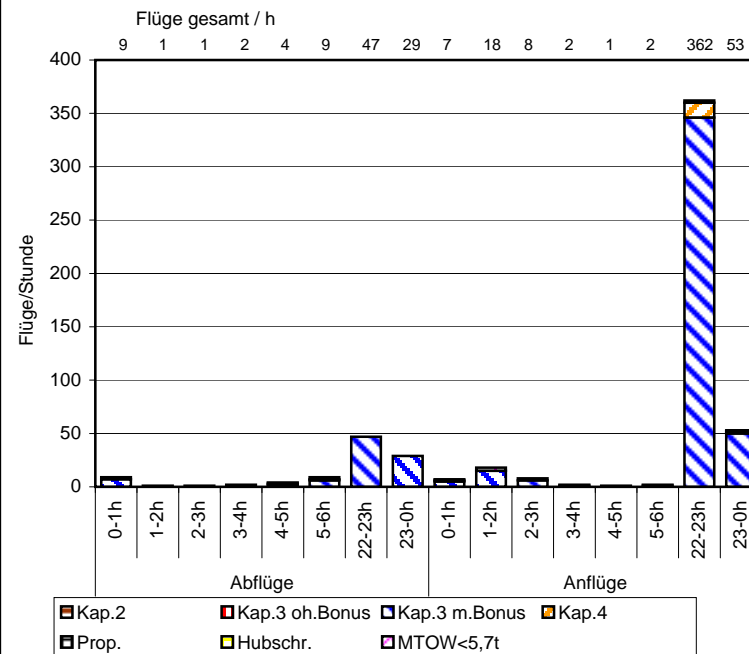
TXL Verteilung der Flüge nach ICAO-
Lärmkategorien Februar 2009
Gesamtanzahl Flüge: 11442



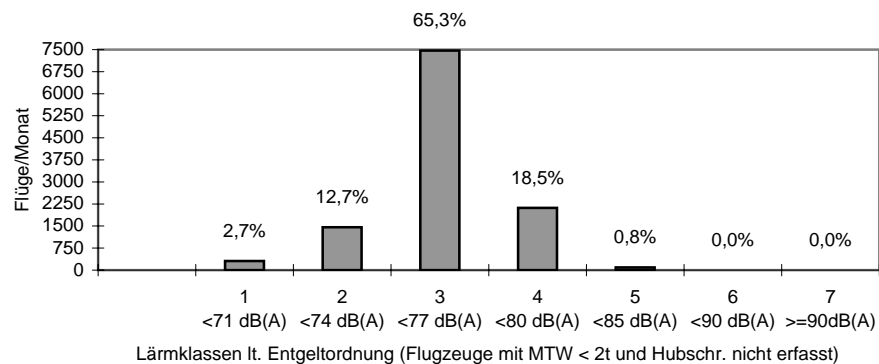
TXL Verteilung der Flüge auf Start-/Landebahnen
und nach Tages-/Nachtzeit Februar 2009 (ohne
Hubschrauber)



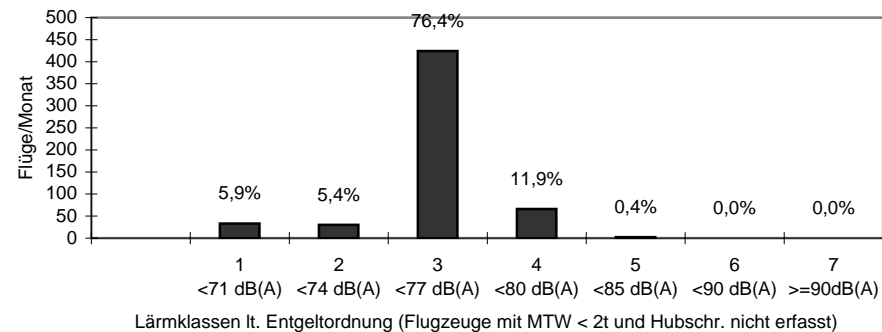
TXL Nachtflüge Februar 2009



Verteilung der Flüge auf Lärmklassen (0 - 24 h) Februar 2009



Verteilung der Nachtflüge auf Lärmklassen (22 - 6 h) Februar 2009



TXL Äquivalenter Dauerschallpegel (q=4)

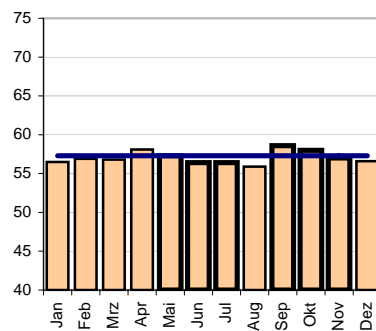
Jahresvergl. 2007/2008

— JahresLeq 2008
 - - JahresLeq 2007
 ■ MonatsLeq

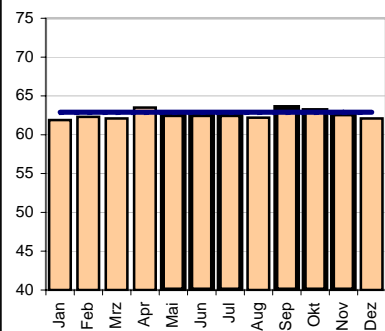
Stark umrandet: 6 verkehrsreichste Monate

*) Nach DIN 45643 unzuverlässig. Messwert wegen zu geringer Zahl erkannter Überflüge

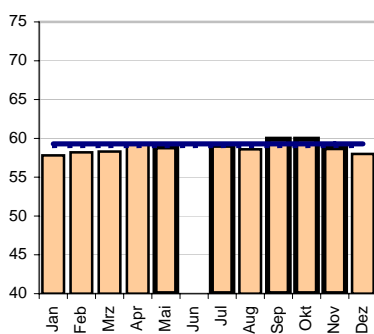
dB(A) Mst.41 JLeq:57,2 / 57,3dB(A)



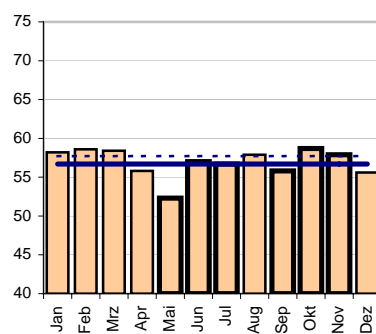
dB(A) Mst.42 JLeq:62,7 / 62,9dB(A)



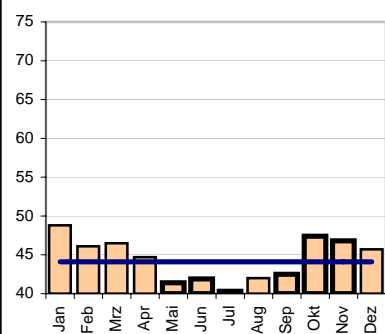
dB(A) Mst.43 JLeq:58,9 / 59,3dB(A)



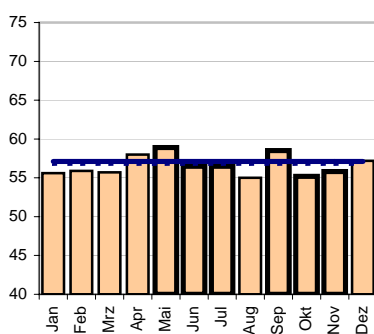
dB(A) Mst.44 JLeq:57,7 / 56,7dB(A)



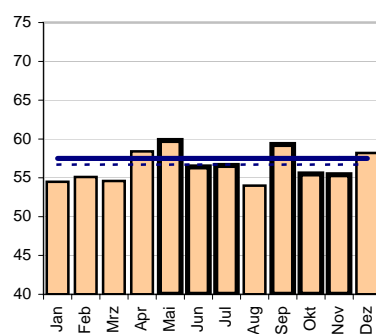
dB(A) Mst.45 JLeq:44,1 / 44,1dB(A)*



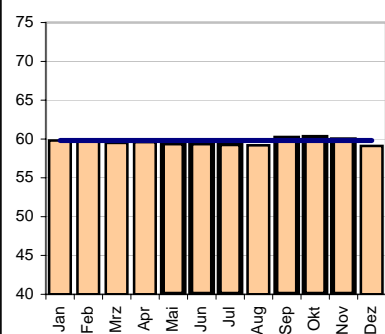
dB(A) Mst.46 JLeq:56,7 / 57,1dB(A)



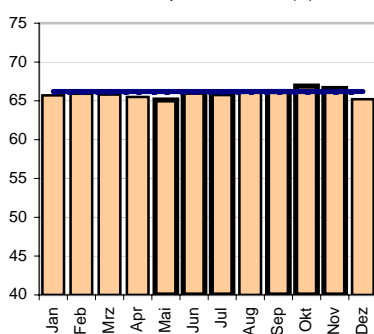
dB(A) Mst.47 JLeq:56,7 / 57,5dB(A)



dB(A) Mst.48 JLeq:59,8 / 59,8dB(A)



dB(A) Mst.49 JLeq:65,9 / 66,2dB(A)



TXL Energieäquiv. Dauerschallpegel (q=3)

Jahresvergl. 2007/2008

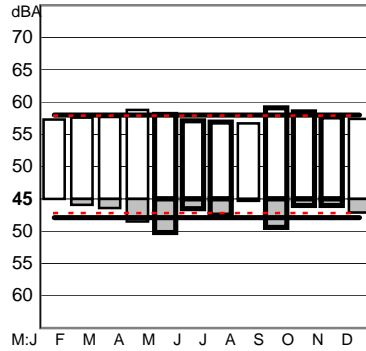
JLeq 2007 Tag(T)
JLeq 2008 Tag(T)

JLeq 2008 Nacht(N)
JLeq 2007 Nacht(N)

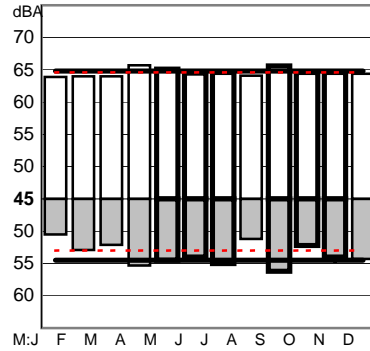
Stark umrandet: 6 verkehrsreichste Monate

*) Nach DIN 45643 unzuverlässig. Messwert wegen zu geringer Zahl erkannter Überflüge

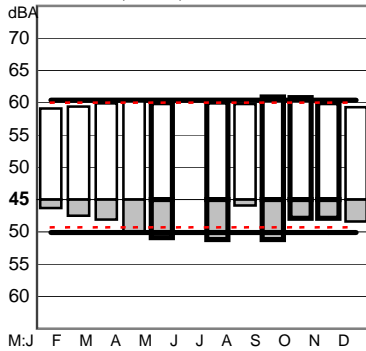
MSt.41 T=58,0 N=47,9dBA



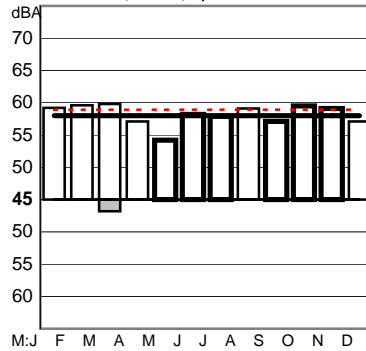
MSt.42 T=64,8 N=54,5dBA



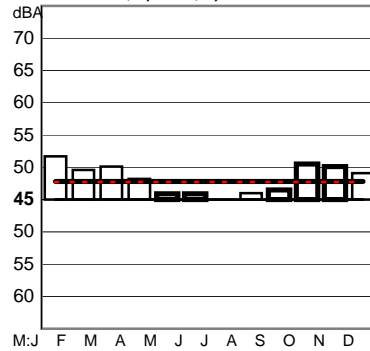
MSt.43 T=60,4 N=50,1dBA



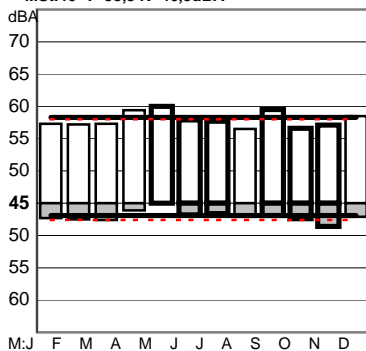
MSt.44 T=58,0 N=43,5*)dBA



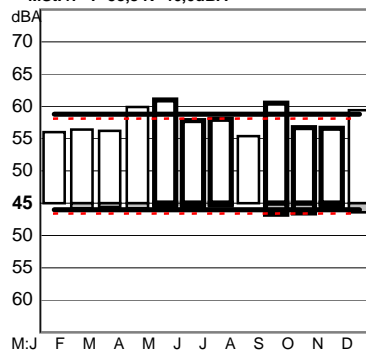
MSt.45 T=47,8*) N=38,4*)dBA



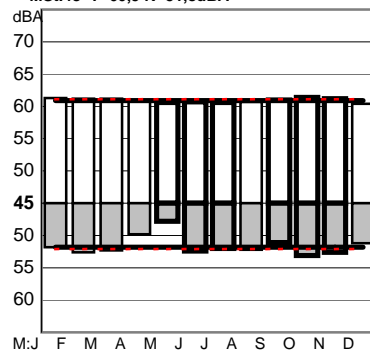
MSt.46 T=58,3 N=46,9dBA



MSt.47 T=58,8 N=46,0dBA



MSt.48 T=60,9 N=51,8dBA



MSt.49 T=69,0 N=60,5dBA

