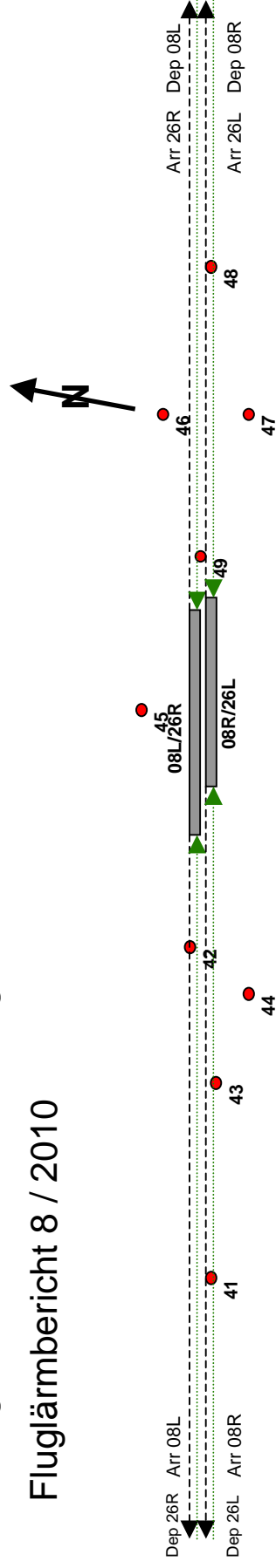
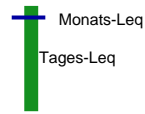


Flughafen Berlin Tegel

Fluglärmbericht 8 / 2010

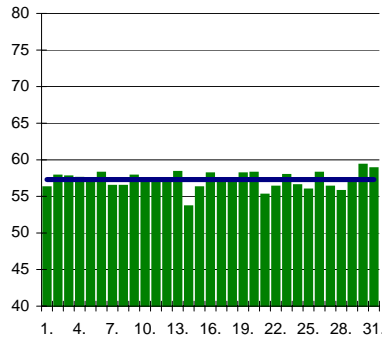


TXL Äquivalenter Dauerschallpegel (q=4) Monat 8/2010

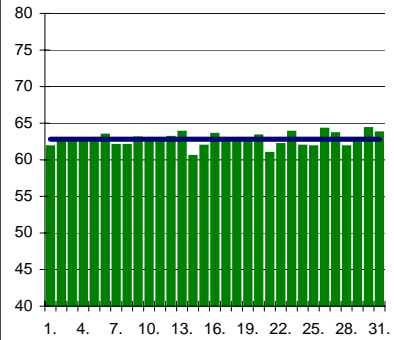


*) Nach DIN 45643 unzuverlässig. Messwert wegen zu geringer Zahl erkannter Überflüge

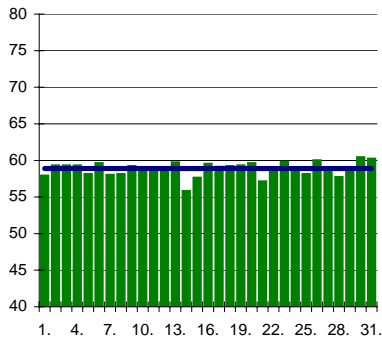
dB(A) Mst.41 MLeq = 57,3 dB(A)



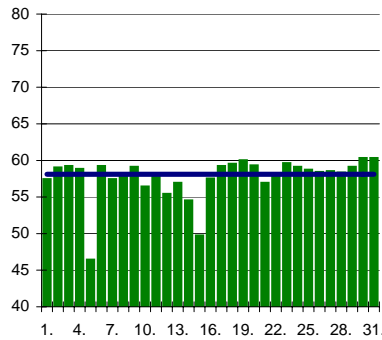
dB(A) Mst.42 MLeq = 62,8 dB(A)



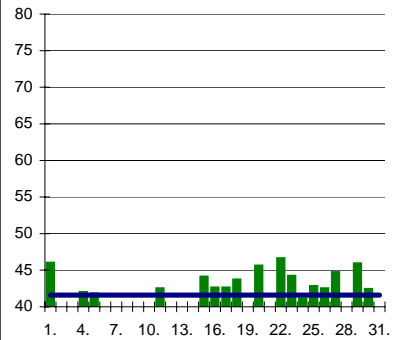
dB(A) Mst.43 MLeq = 58,9 dB(A)



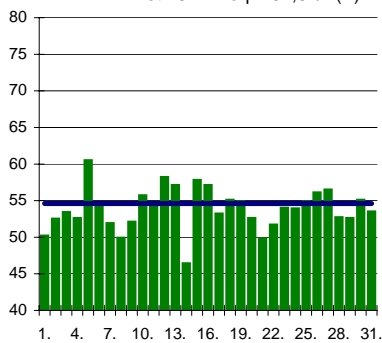
dB(A) Mst.44 MLeq = 58,1 dB(A)



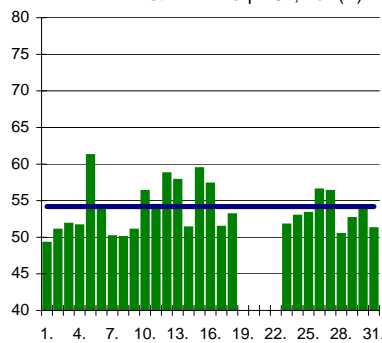
dB(A) Mst.45 MLeq = 41,6* dB(A)



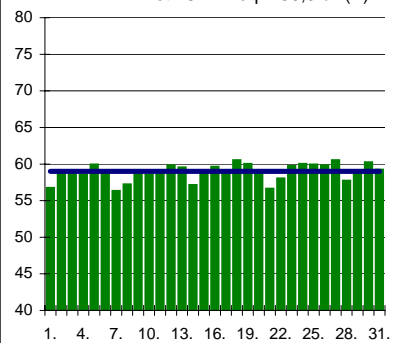
dB(A) Mst.46 MLeq = 54,6 dB(A)



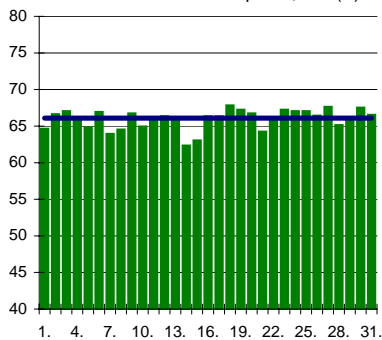
dB(A) Mst.47 MLeq = 54,2 dB(A)



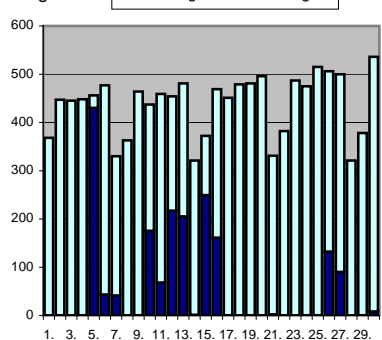
dB(A) Mst.48 MLeq = 59,0 dB(A)



dB(A) Mst.49 MLeq = 66,1 dB(A)



Flüge in Richtung 08 Richtung 26



Techn. Ausfälle:

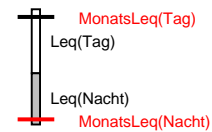
19.08. M47 1387'
20.08. M47 1440'
21.08. M47 1440'
22.08. M47 1440'
23.08. M47 624'
31.08. M43 4'

Wetterbedingte Ausfälle:

19.08. 8' 22.08. 26'
24.08. 174' 25.08. 451'
29.08. 6'

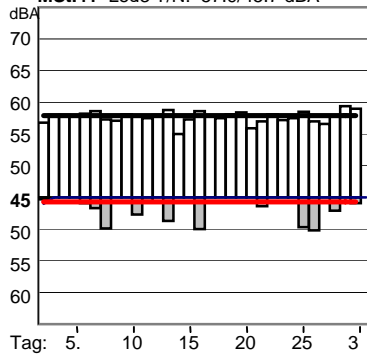
TXL Energieäquiv. Dauerschallpegel (q=3)

Monat 8 / 2010

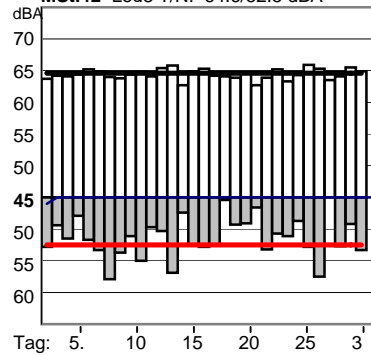


*) Nach DIN 45643 unzuverlässig. Messwert wegen zu geringer Zahl erkannter Überflüge

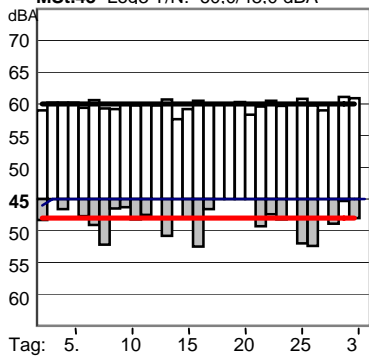
MSt.41 Leq3 T/N: 57.9/45.7 dBA



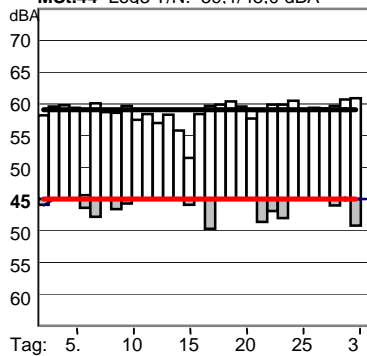
MSt.42 Leq3 T/N: 64.6/52.5 dBA



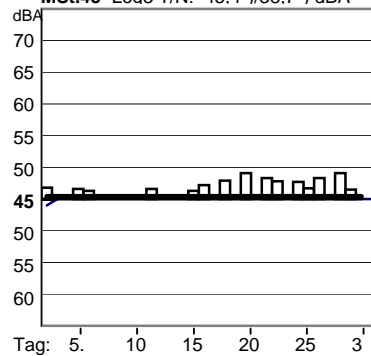
MSt.43 Leq3 T/N: 60.0/48.0 dBA



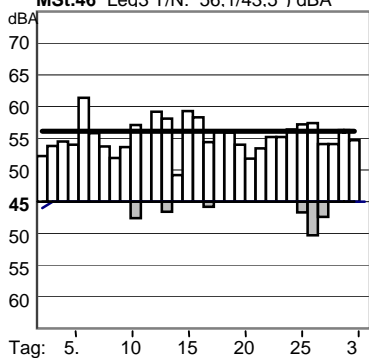
MSt.44 Leq3 T/N: 59.1/45.0 dBA



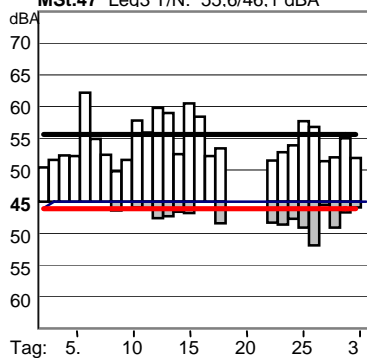
MSt.45 Leq3 T/N: 45.4*/38.7*) dBA



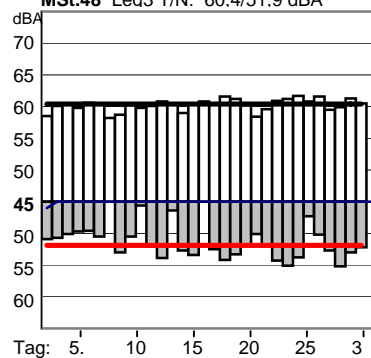
MSt.46 Leq3 T/N: 56.1/43.5*) dBA



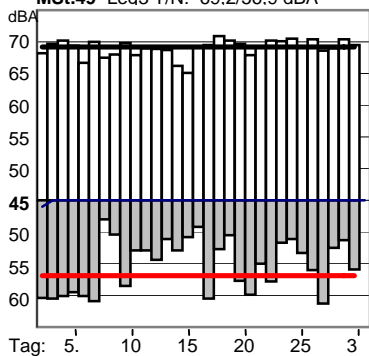
MSt.47 Leq3 T/N: 55.6/46.1 dBA



MSt.48 Leq3 T/N: 60.4/51.9 dBA



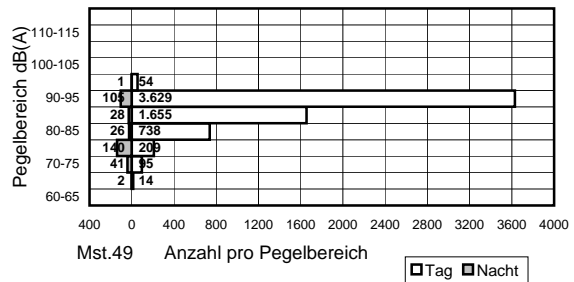
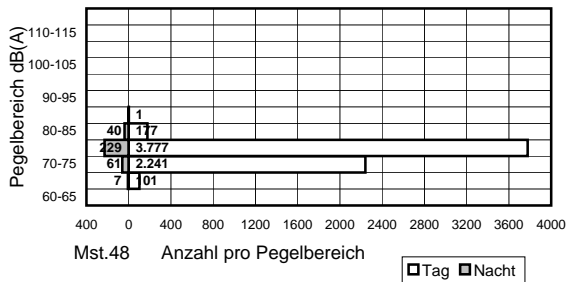
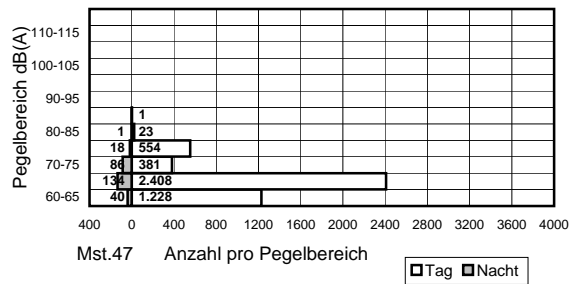
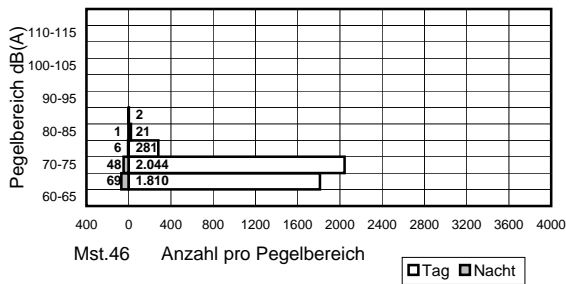
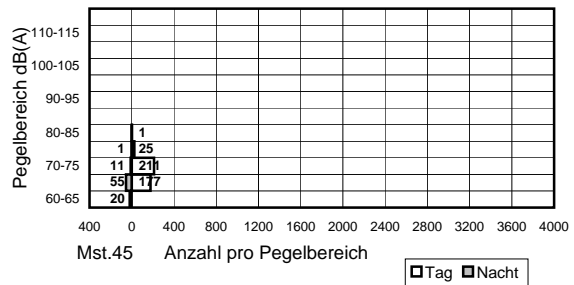
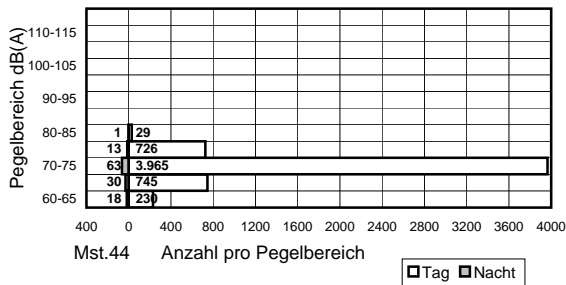
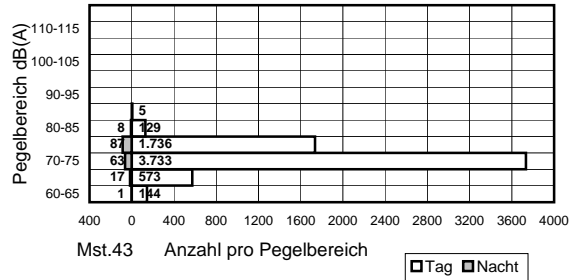
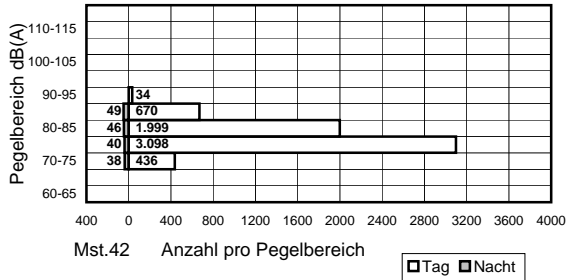
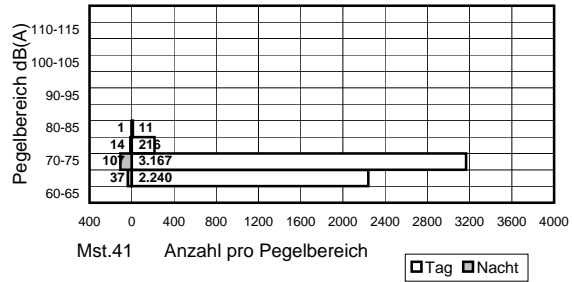
MSt.49 Leq3 T/N: 69.2/56.9 dBA



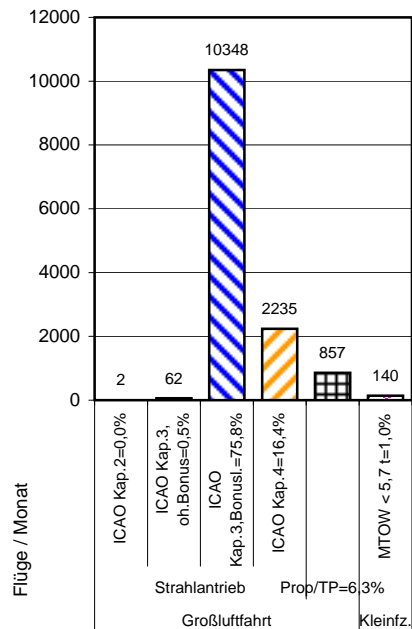
TXL

Monat 8/2010

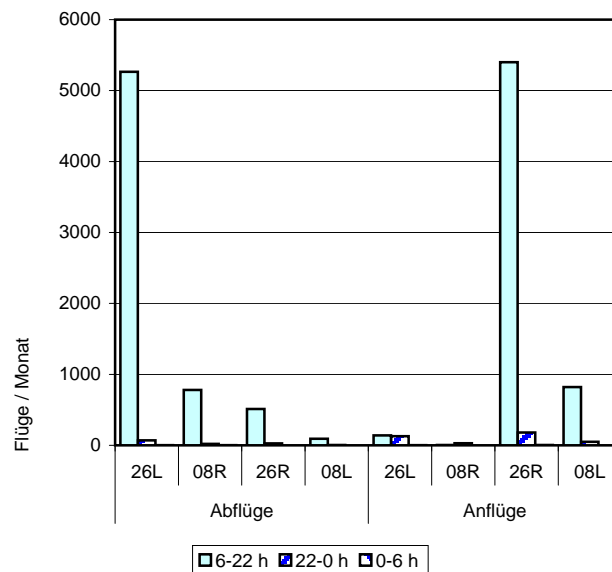
Häufigkeitsverteilung der Maximalschallpegel



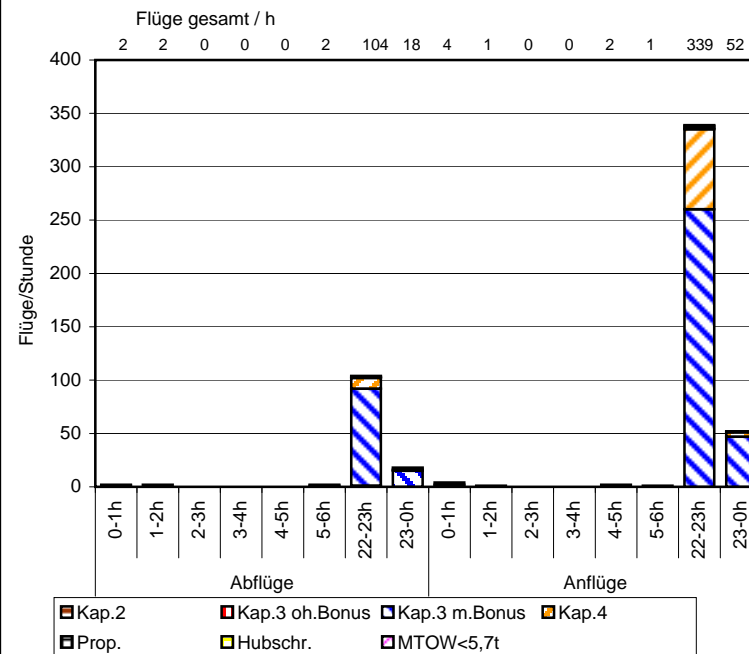
TXL Verteilung der Flüge nach ICAO-
Lärmkategorien August 2010
Gesamtanzahl Flüge: 13644



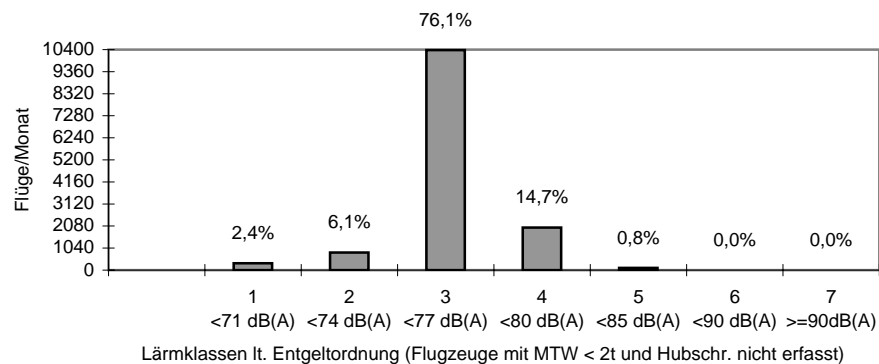
TXL Verteilung der Flüge auf Start-/Landebahnen
und nach Tages-/Nachtzeit August 2010 (ohne
Hubschrauber)



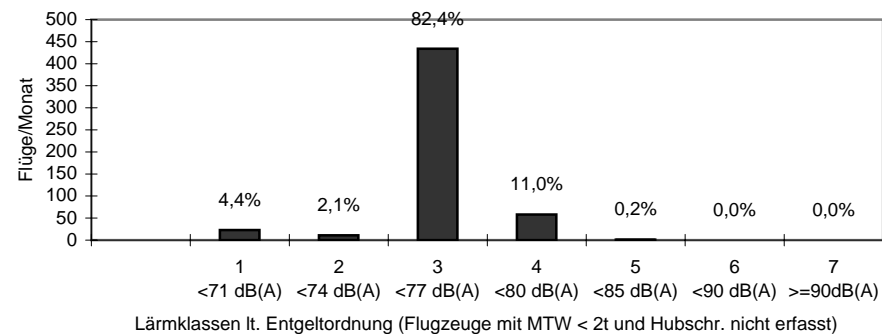
TXL Nachtflüge August 2010



Verteilung der Flüge auf Lärmklassen (0 - 24 h) August 2010

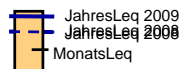


Verteilung der Nachtflüge auf Lärmklassen (22 - 6 h) August 2010



TXL Äquivalenter Dauerschallpegel (q=4)

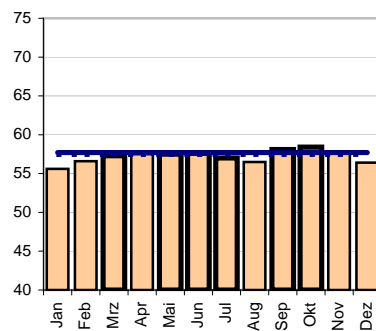
Jahresvergl. 2008/2009



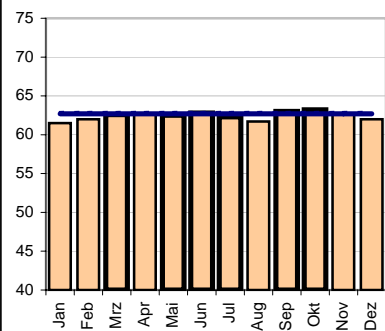
Stark umrandet: 6 verkehrsreichste Monate

*) Nach DIN 45643 unzuverlässig. Messwert wegen zu geringer Zahl erkannter Überflüge

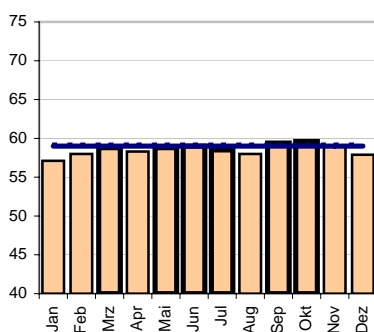
dB(A) Mst.41 JLeq:57,3 / 57,7dB(A)



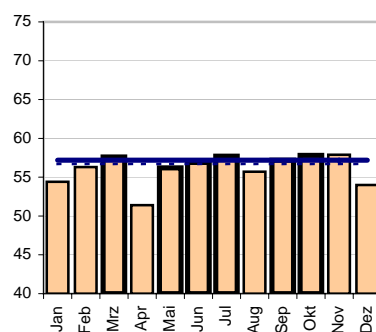
dB(A) Mst.42 JLeq:62,9 / 62,7dB(A)



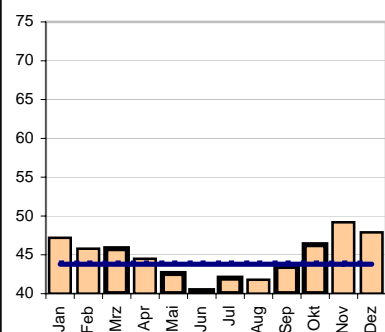
dB(A) Mst.43 JLeq:59,3 / 59,0dB(A)



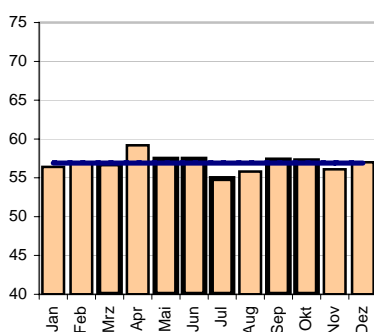
dB(A) Mst.44 JLeq:56,7 / 57,2dB(A)



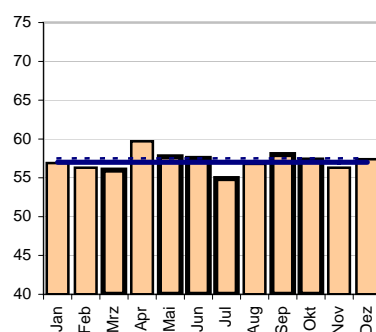
dB(A) Mst.45 JLeq:44,1 / 43,8dB(A)*)



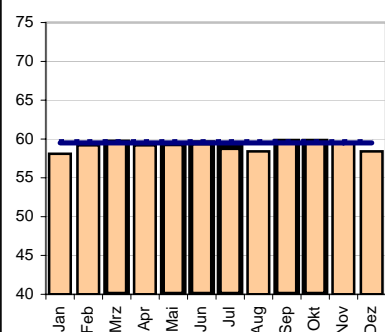
dB(A) Mst.46 JLeq:57,1 / 56,9dB(A)



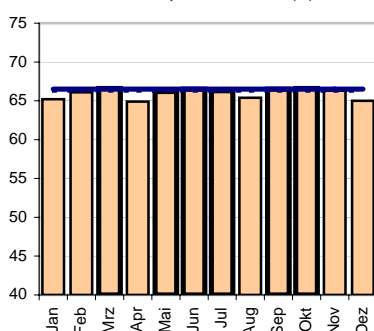
dB(A) Mst.47 JLeq:57,5 / 57,0dB(A)



dB(A) Mst.48 JLeq:59,8 / 59,5dB(A)



dB(A) Mst.49 JLeq:66,2 / 66,5dB(A)



TXL Energieäquiv. Dauerschallpegel (q=3)

Jahresvergl. 2008/2009

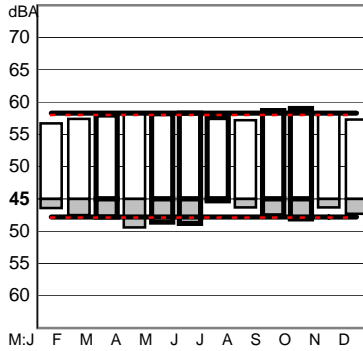
JLeq 2008 Tag(T)
JLeq 2009 Tag(T)

JLeq 2009 Nacht(N)
JLeq 2008 Nacht(N)

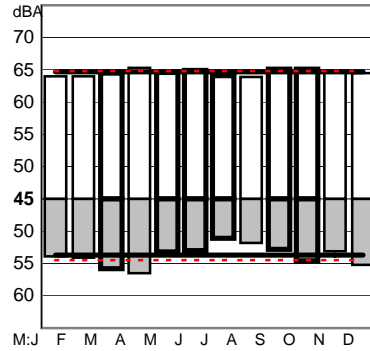
Stark umrandet: 6 verkehrsreichste Monate

*) Nach DIN 45643 unzuverläss. Messwert
wegen zu geringer Zahl erkannter Überflüge

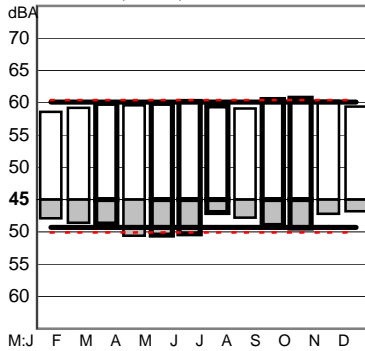
MSt.41 T=58,3 N=47,8dBA



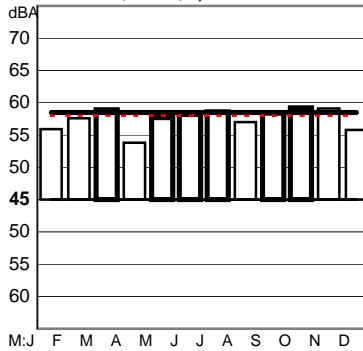
MSt.42 T=64,7 N=53,7dBA



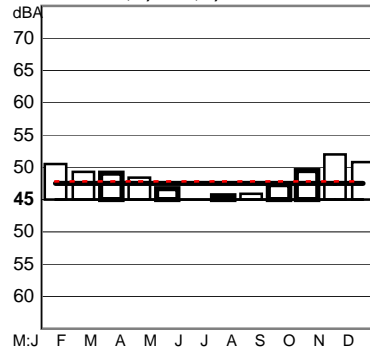
MSt.43 T=60,1 N=49,3dBA



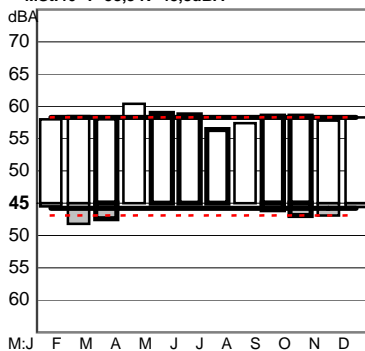
MSt.44 T=58,5 N=42,5*)dBA



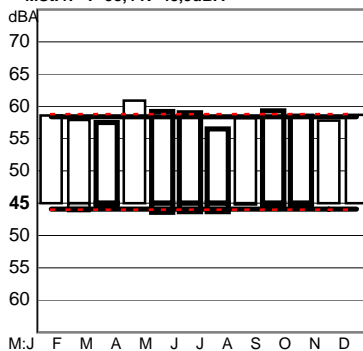
MSt.45 T=47,5*) N=38,8*)dBA



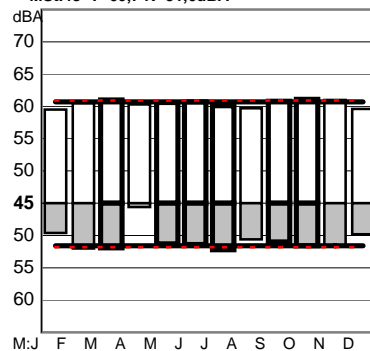
MSt.46 T=58,3 N=45,8dBA



MSt.47 T=58,4 N=45,9dBA



MSt.48 T=60,7 N=51,6dBA



MSt.49 T=69,4 N=59,9dBA

