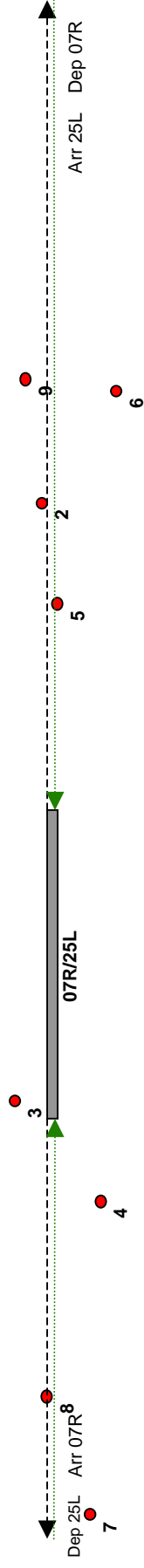


# Flughafen Berlin Schönefeld

Fluglärmbericht 6 / 2009



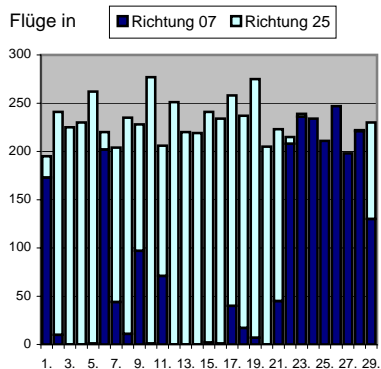
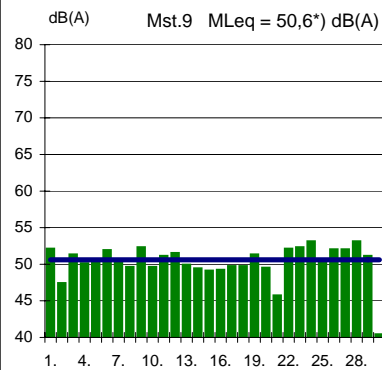
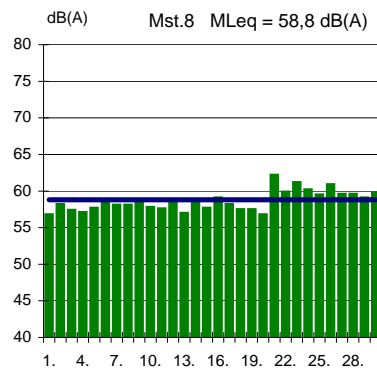
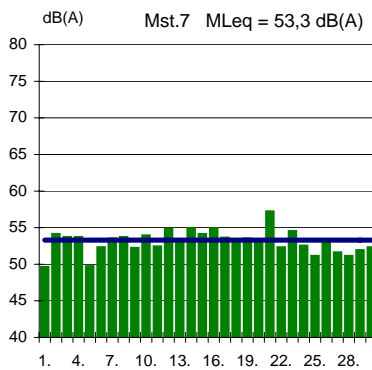
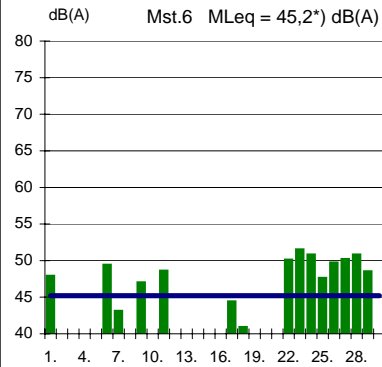
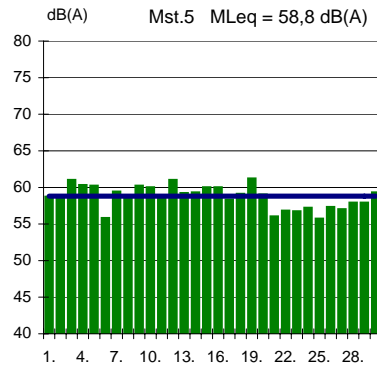
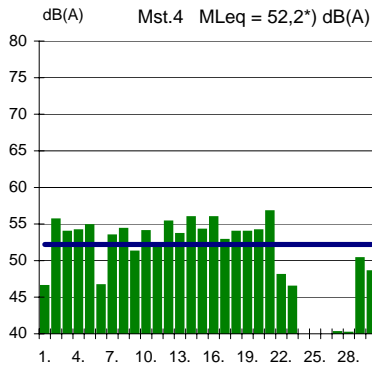
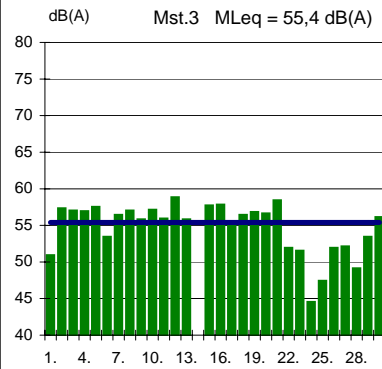
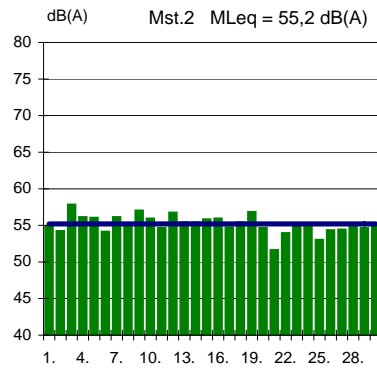
Dep 25L Arr 07R<sup>8</sup> Arr 25L Dep 07R

- |                       |            |                          |                        |
|-----------------------|------------|--------------------------|------------------------|
| 2 Bohnsdorf, Waldstr. | 4 Selchow  | 6 Waltersdf.,Waldsiedlg. | 8 Mahlow, Waldsiedl.   |
| 3 Wassmannsdorf       | 5 Hubertus | 7 Blankenfelde           | 9 Bohnsdorf, Fließstr. |

# SXF Äquivalenter Dauerschallpegel (q=4) Monat 6/2009



\*) Nach DIN 45643 unzuverlässig. Messwert wegen zu geringer Zahl erkannter Überflüge



Techn. Ausfälle:  
 13.06. M3 657'  
 14.06. M3 1440'  
 15.06. M3 698'  
 23.06. M7 5'  
 24.06. M5 44'

Wetterbedingte Ausfälle:  
 02.06. 53' 03.06. 422'  
 04.06. 92' 05.06. 10'  
 08.06. 163' 10.06. 52'  
 11.06. 495' 12.06. 422'  
 13.06. 917' 18.06. 8'  
 19.06. 19' 20.06. 13'  
 22.06. 17' 23.06. 446'  
 24.06. 33' 30.06. 21'

# SXF Energieäquiv.

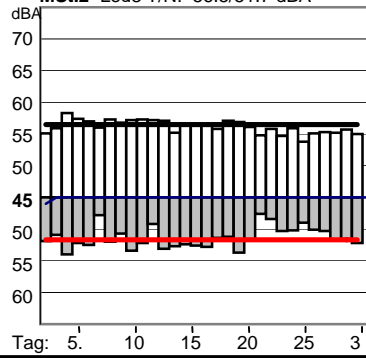
## Dauerschallpegel (q=3)

Monat 6 / 2009

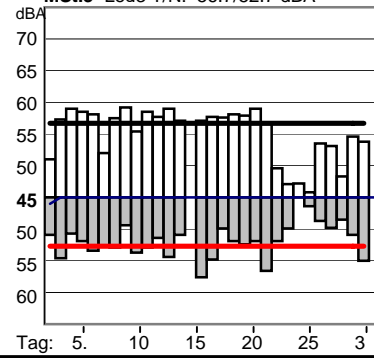


\*) Nach DIN 45643 unzuverlässig. Messwert wegen zu geringer Zahl erkannter Überflüge

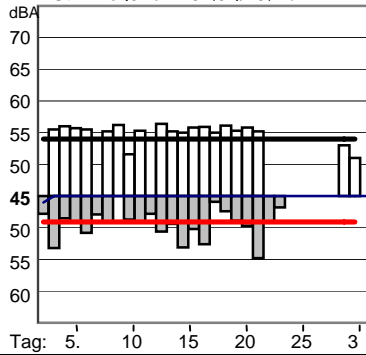
MSt.2 Leq3 T/N: 56.5/51.7 dBA



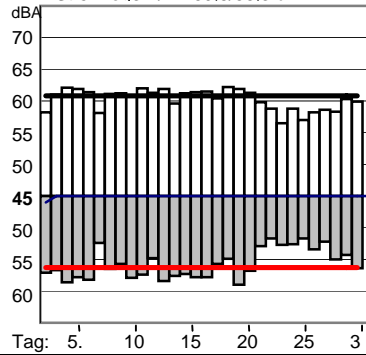
MSt.3 Leq3 T/N: 56.7/52.7 dBA



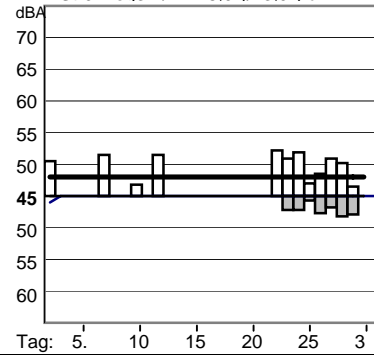
MSt.4 Leq3 T/N: 54.0\*/49.1 dBA



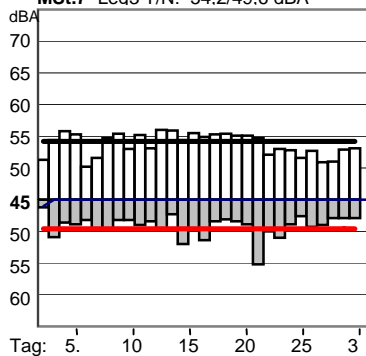
MSt.5 Leq3 T/N: 60.8/56.3 dBA



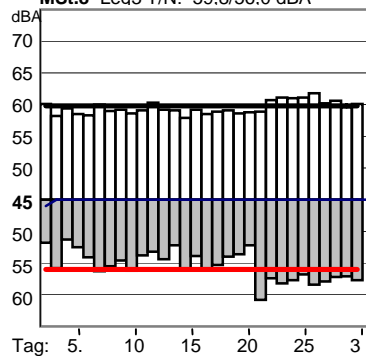
MSt.6 Leq3 T/N: 48.0\*/43.0\*) dBA



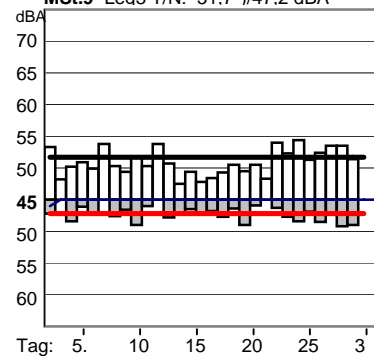
MSt.7 Leq3 T/N: 54.2/49.6 dBA



MSt.8 Leq3 T/N: 59.8/56.0 dBA



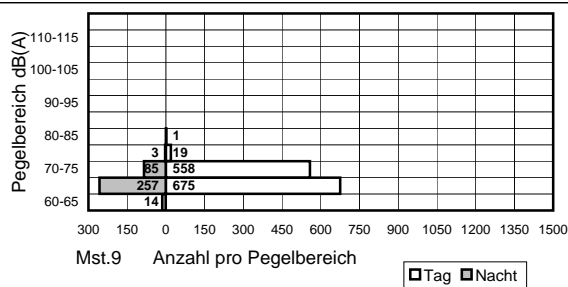
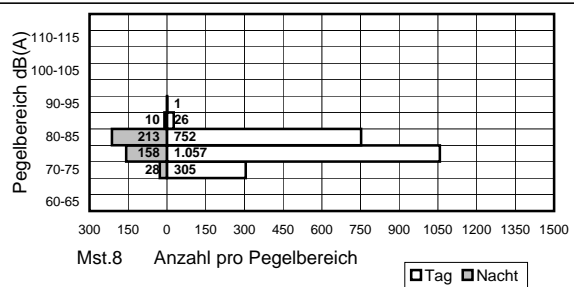
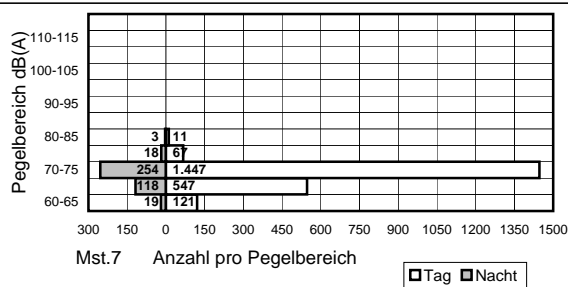
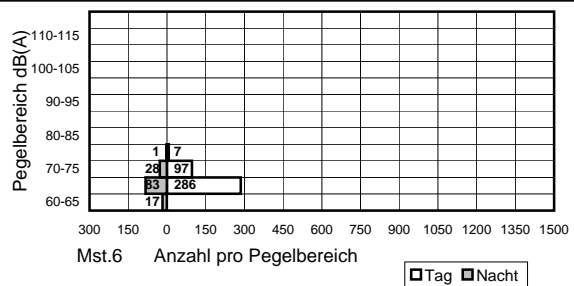
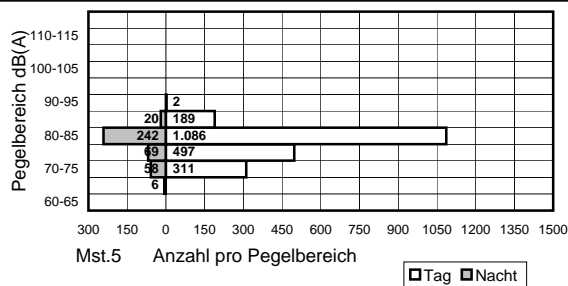
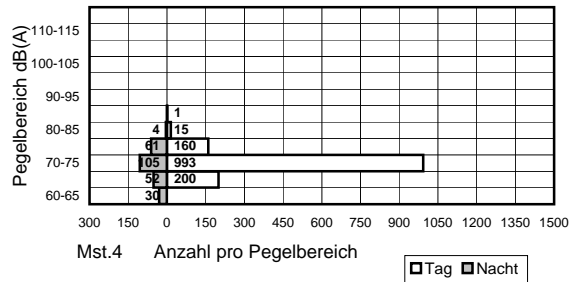
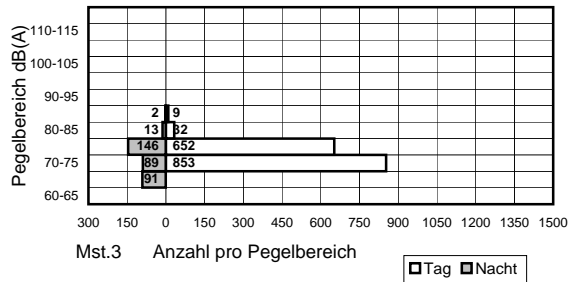
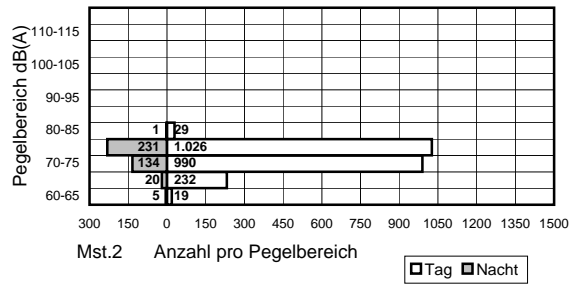
MSt.9 Leq3 T/N: 51.7\*/47.2 dBA



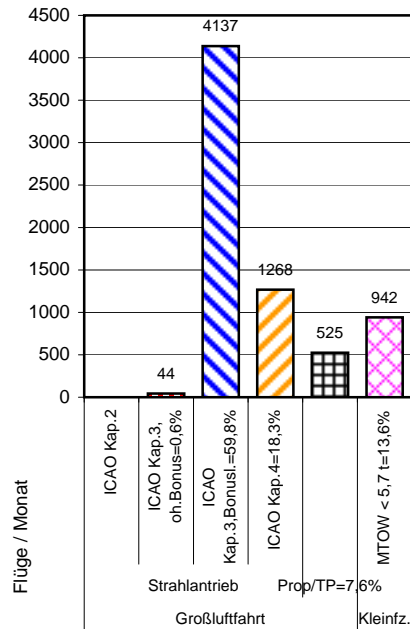
# SXF

Monat 6/2009

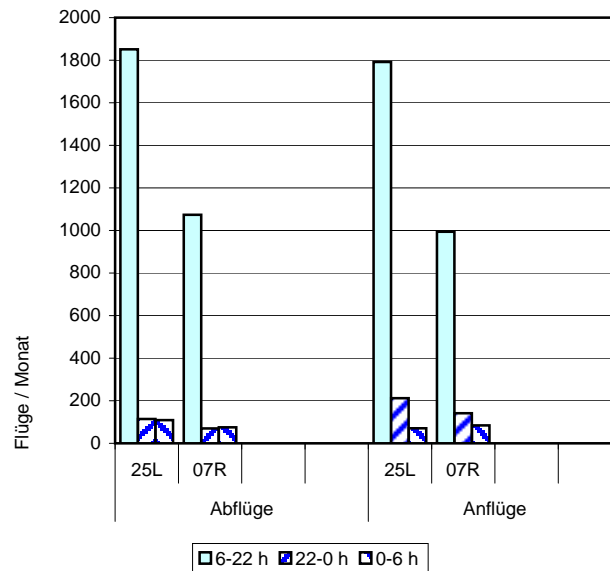
## Häufigkeitsverteilung der Maximalschallpegel



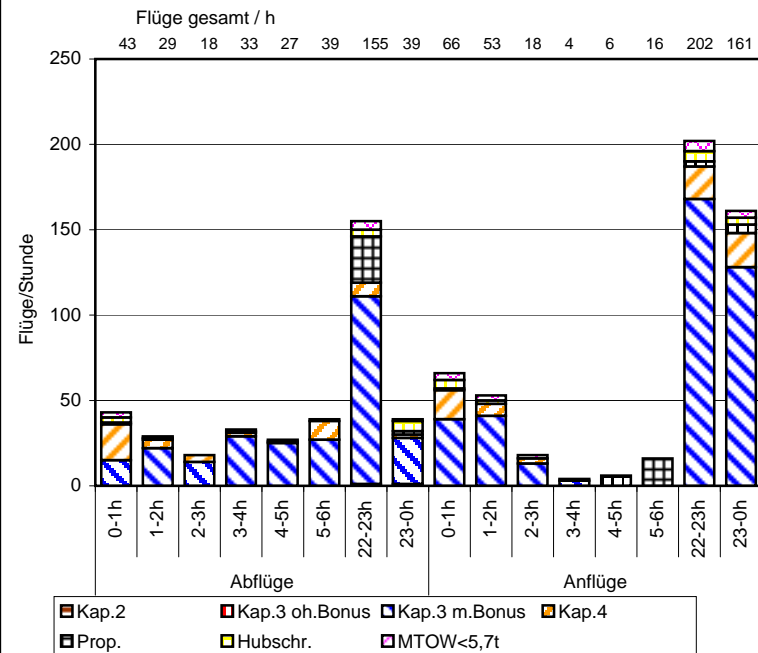
SXF Verteilung der Flüge nach ICAO-Lärmkategorien Juni 2009  
Gesamtanzahl Flüge: 6920



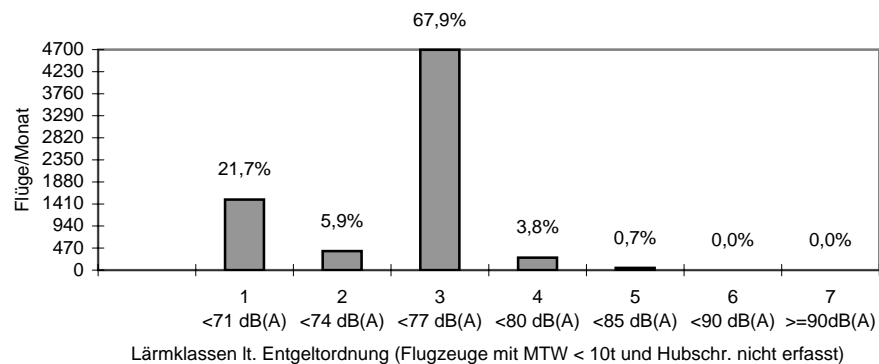
SXF Verteilung der Flüge auf Start-/Landebahnen und nach Tages-/Nachtzeit Juni 2009 (ohne Hubschrauber)



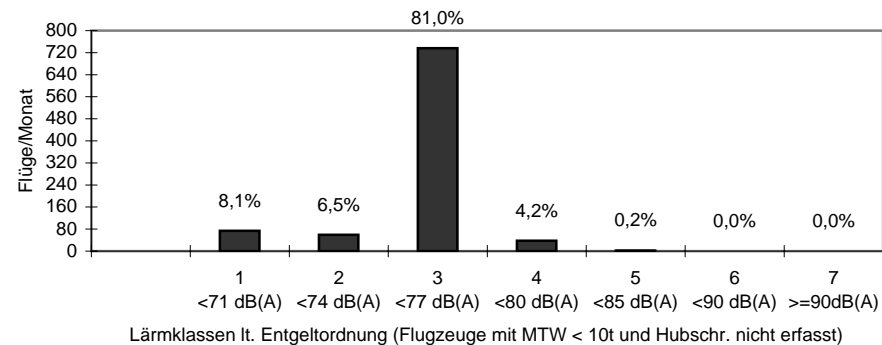
SXF Nachtflüge Juni 2009



Verteilung der Flüge auf Lärmklassen (0 - 24 h) Juni 2009

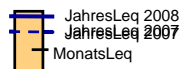


Verteilung der Nachtflüge auf Lärmklassen (22 - 6 h) Juni 2009



# SXF Äquivalenter Dauerschallpegel (q=4)

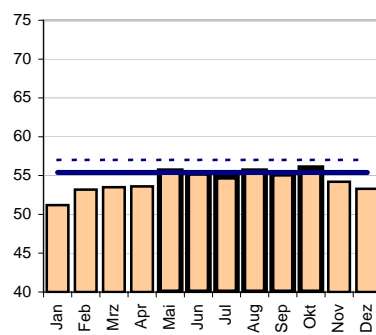
## Jahresvergl. 2007/2008



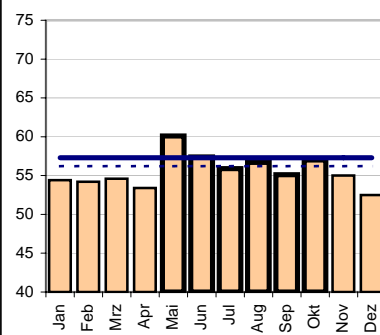
Stark umrandet: 6 verkehrsreichste Monate

\*) Nach DIN 45643 unzuverlässig. Messwert wegen zu geringer Zahl erkannter Überflüge

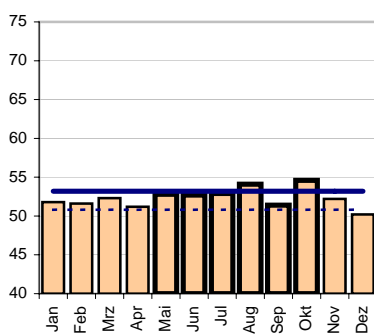
dB(A) Mst.2 JLeq:57,0 / 55,4dB(A)



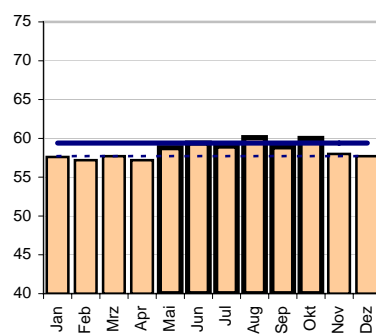
dB(A) Mst.3 JLeq:56,2 / 57,3dB(A)



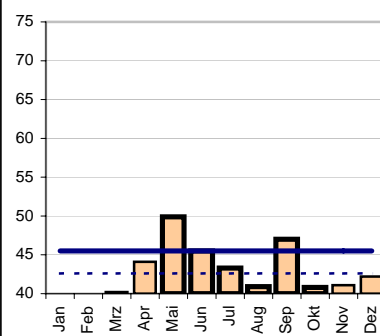
dB(A) Mst.4 JLeq:50,8 / 53,2dB(A)



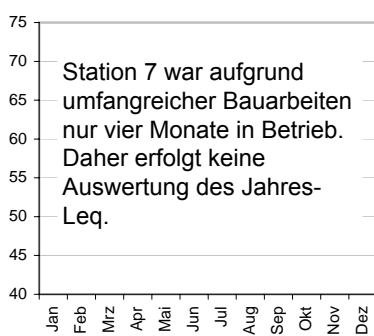
dB(A) Mst.5 JLeq:57,7 / 59,4dB(A)



dB(A) Mst.6 JLeq:42,6 / 45,5dB(A)\*

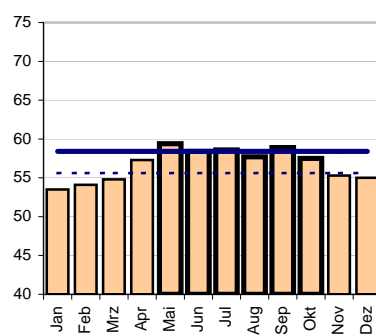


dB(A) Mst.7 JLeq:52,3 / 0,0dB(A)\*

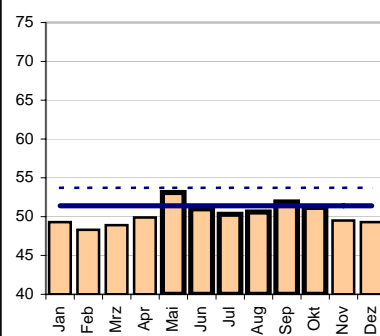


Station 7 war aufgrund umfangreicher Bauarbeiten nur vier Monate in Betrieb. Daher erfolgt keine Auswertung des Jahres-Leq.

dB(A) Mst.8 JLeq:55,6 / 58,4dB(A)



dB(A) Mst.9 JLeq:53,7 / 51,4dB(A)



# SXF

Energieäquiv.  
Dauerschallpegel (q=3)

Jahresvergl. 2007/2008

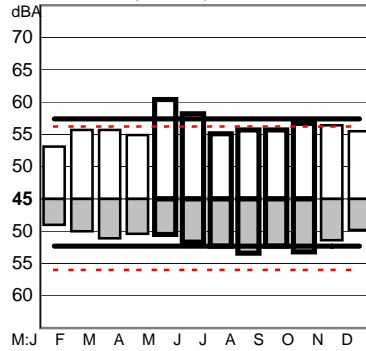
JLeq 2007 Tag(T)  
JLeq 2008 Tag(T)

JLeq 2008 Nacht(N)  
JLeq 2007 Nacht(N)

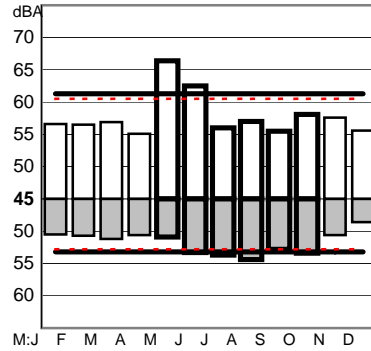
Stark umrandet: 6 verkehrsreichste Monate

\*) Nach DIN 45643 unzuverlässig. Messwert  
wegen zu geringer Zahl erkannter Überflüge

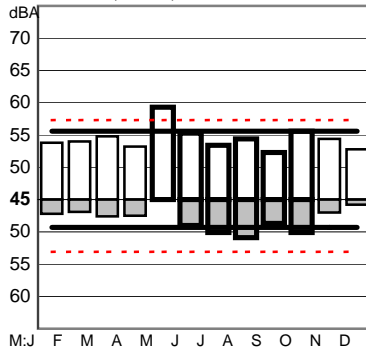
MSt.2 T=57,4\*) N=52,3\*)dBA



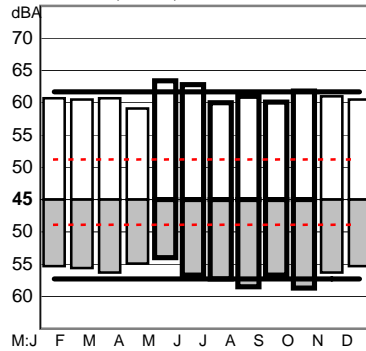
MSt.3 T=61,3 N=53,2dBA



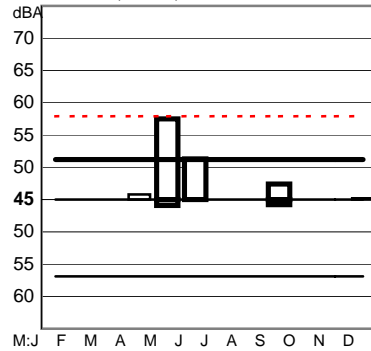
MSt.4 T=55,6 N=49,3dBA



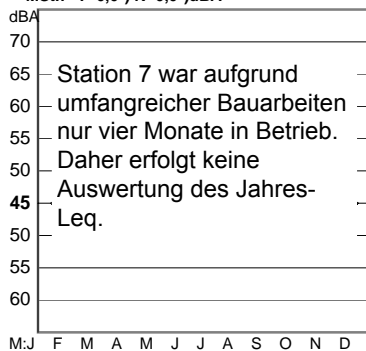
MSt.5 T=61,7 N=57,3dBA



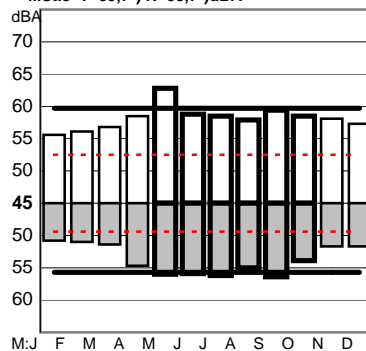
MSt.6 T=51,2 N=43,7dBA



MSt.7 T=0,0\*) N=0,0\*)dBA



MSt.8 T=59,7\*) N=55,7\*)dBA



MSt.9 T=53,8 N=48,0dBA

